

Getting Started with REXYGEN

User guide

REX Controls s.r.o.

Version 3.0.3

2024-11-03

Plzeň (Pilsen), Czech Republic

Contents

1	Introduction	3
1.1	Features of the REXYGEN system	3
1.1.1	Supported platforms	3
1.2	Structure of the REXYGEN system	4
1.3	Programming in the REXYGEN system	4
1.4	Main components of the REXYGEN system	5
1.4.1	REXYGEN Studio – the development environment	5
1.4.2	REXYGEN HMI Designer	5
1.4.3	REXYGEN Compiler	5
1.4.4	RexCore	5
2	Licensing REXYGEN using REXYGEN DWM	7
2.1	Obtaining a DEMO licence	8
2.2	Obtaining a permanent licence	11
2.2.1	Activation of the permanent licence	11
3	Default REXYGEN project on Monarco HAT, Unipi Patron and Unipi Neuron	13
3.1	Control the platform from HMI	13
3.2	Control the platform through OPC UA	15
3.3	Loading project from the platform to REXYGEN Studio	18
4	Configuration, compilation and execution	21
4.1	Creating a new project	21
4.2	Compiling and running a project	26
4.3	Adding a user interface (HMI)	32
4.4	Ready for interaction with the outer world	37
5	Summary	38
A	Graphical HMI with REXYGEN HMI Designer	39
A.1	Initializing the HMI design	39
A.2	Adding the first HMI components	41
A.3	Linking HMI components with the running algorithm	43

A.4	Adding more HMI components	48
A.5	Additional links to the running algorithm	49
A.6	The final steps	50
B	Licensing of the REXYGEN system	53
B.1	Obtaining a DEMO licence	53
B.2	Obtaining a permanent licence	56
B.2.1	Activation of the permanent licence	57
C	IP address of your WAGO PFC powered by REXYGEN	60
	Bibliography	60

Chapter 1

Introduction

The REXYGEN system is a family of software products for automation projects. You can use it in all fields of automation, robotics, measurements and feedback control.

The runtime core of the REXYGEN system turns your platform into a programmable device which will run your algorithms.

1.1 Features of the REXYGEN system

- Graphical programming without hand-coding
- Programming control units on a standard PC or laptop
- User interface for desktop, tablet and smartphone (HMI)
- Wide family of supported devices and input-output units
- Industry-proven control algorithms
- Easy integration into business IT infrastructure (ERP/BMS)
- REST API for seamless integration into Industry 4.0 and (I)IoT solutions

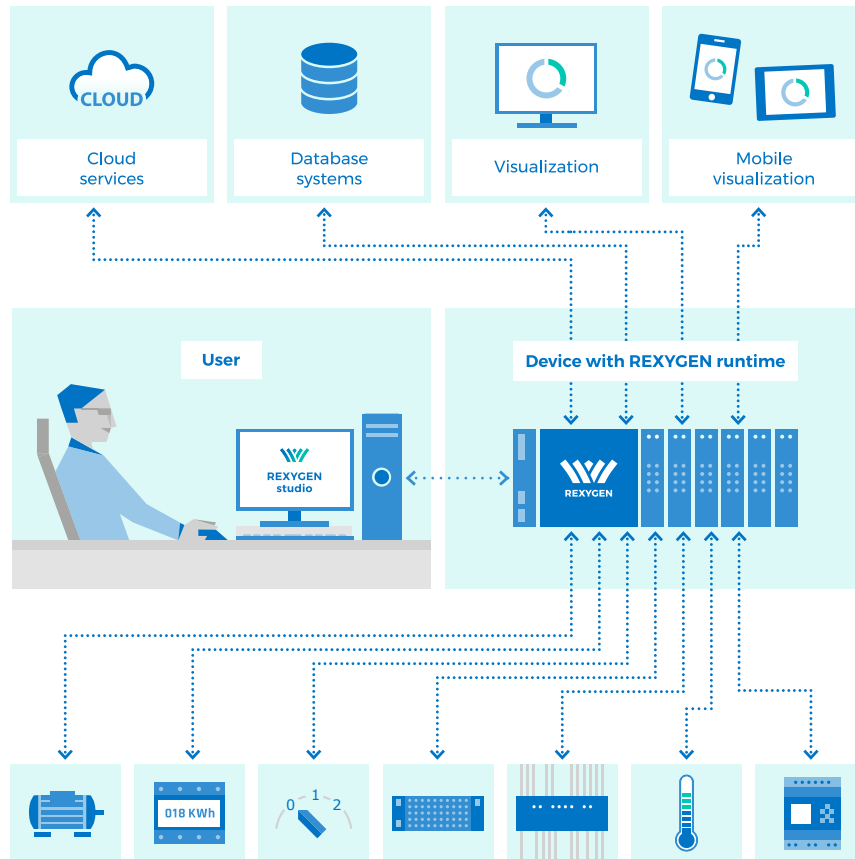
1.1.1 Supported platforms

The REXYGEN system is currently supported and tested on the following platforms:

- Industrial PC with Windows or Linux (including RT_PREEMPT)
- Weidmüller u-OS PLC (WL2000, M3000, M4000)
- Unipi PLC (Iris, Patron, Neuron)
- Raspberry Pi
- Monarco HAT

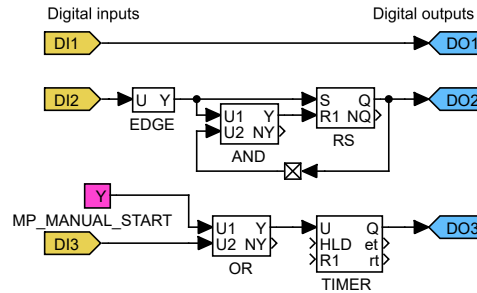
However, the REXYGEN system can be operated on any device running the Linux operating system. Guides are also available for older platforms such as WAGO PFC100/200, Unipi v1.1, and Pigeon PLC. However, these platforms are no longer actively tested.

1.2 Structure of the REXYGEN system



1.3 Programming in the REXYGEN system

The REXYGEN system offers a graphical development environment for programming the algorithms. You can use standard desktop or laptop PC. You create the algorithms from the so-called function blocks. The library includes countless items (timers, comparators, filters, PID controllers and many more).



1.4 Main components of the REXYGEN system

1.4.1 REXYGEN Studio – the development environment

REXYGEN Studio is a developer's tool which runs on a standard PC with Windows. You create the algorithms using the function block library¹ of the REXYGEN system [1]. The library contains simple comparators and timers as well as advanced blocks for signal processing and feedback control (PID controllers etc.). You compile your project on your PC and run it on your platform.

Once running, you can watch your algorithm in real-time. Just select the signals and function blocks of your interest. You can also obtain detailed hierarchical information about the running algorithm and diagnose the runtime core and execution of your algorithm. You can connect via local network or over the Internet.

1.4.2 REXYGEN HMI Designer

The REXYGEN HMI Designer is another developer's tool intended for designing graphical user interface (or HMI, Human Machine Interface, if you prefer) for your algorithms. The user interface is included in the project and it is copied to your platform along with the algorithm.

1.4.3 REXYGEN Compiler

The REXYGEN Compiler converts your algorithms into binary code of the REXYGEN system. The compiler is almost invisible for the user, it is invoked from the REXYGEN Studio development environment. The compiler detects and reports possible errors in your algorithms.

1.4.4 RexCore

The RexCore (REXYGEN runtime core) service runs on the target device (platform). Once installed, it runs in the background and therefore it is almost invisible for the user. It handles timing and execution of your algorithms and provides various services.

¹The IEC 61131-3 standard defines Function Block Diagram (FBD) as one of the PLC programming techniques.

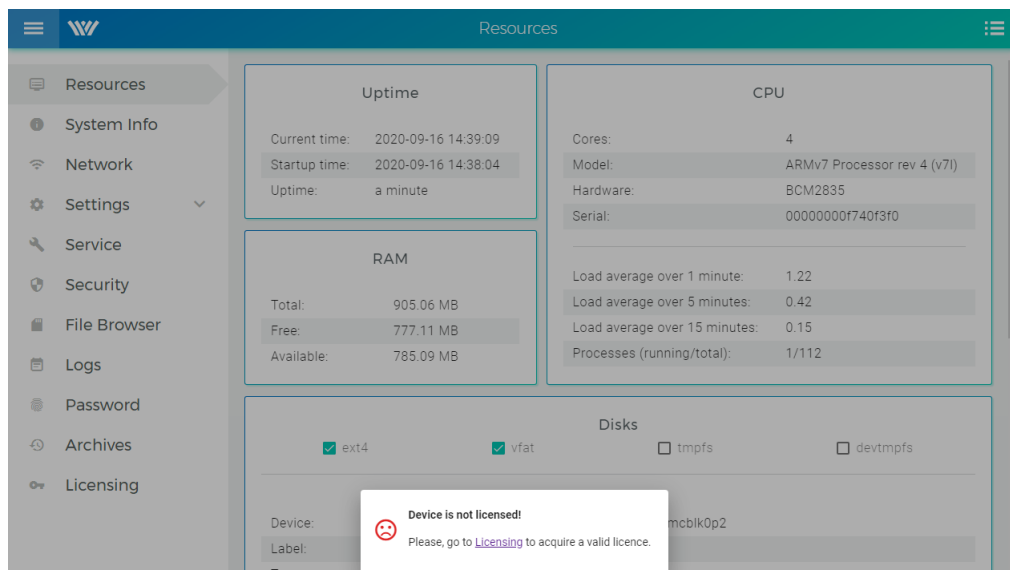
The individual tasks are prioritized and executed using preemptive multitasking. The **RexCore** service is automatically started at system startup.

RexCore further contains an integrated webserver providing user interface (HMI) and REST API. Chapter ?? deals with installing all the necessary modules on the platform.

Chapter 2

Licensing REXYGEN using REXYGEN DWM

The first thing you will need is to get the license. The fastest way is to use the REXYGEN DWM tool. Open your web-browser and input IP address of the platform. You should see the **Device is not licensed!** message on the bottom of the screen. Please, click on the [Licensing](#).



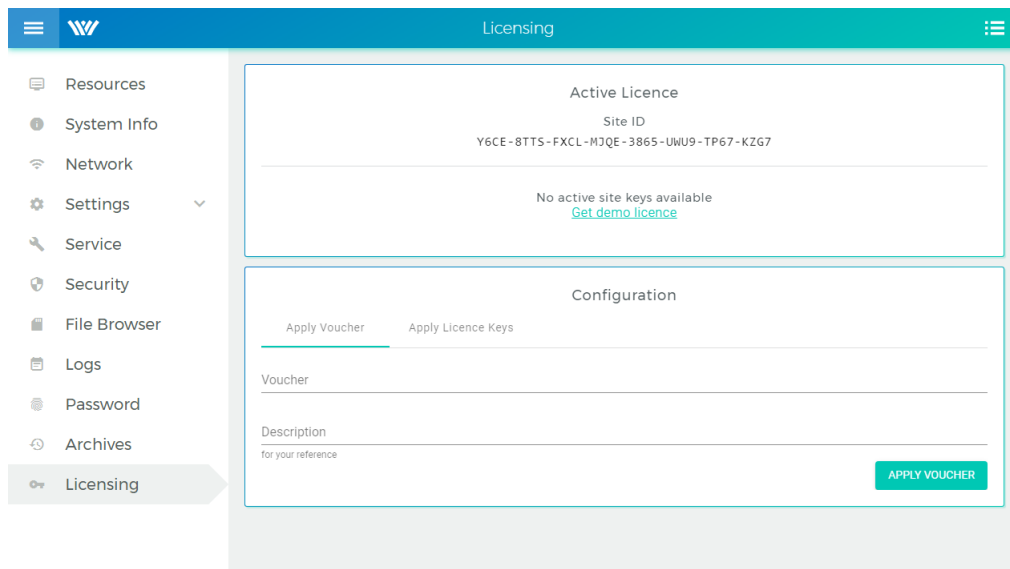
The licensing model of the REXYGEN system is quite simple:

- The development tools are free to use, you can install it on as many computers as you want.
- The RexCore runtime module always needs a licence to run on your platform. There are DEMO licences available at no cost and there are permanent licences which you can purchase. Each platform needs an individual licence.

2.1 Obtaining a DEMO licence

The DEMO licence is intended for evaluating, testing and educational purposes. Feel free to experiment with the DEMO licence as long as you need. Commercial use of the DEMO licence is not allowed.

When you attempt to run your algorithm on a device that does not have a valid license, you will be presented with options to license the device. If you do not already have a license or a license voucher, you can request a DEMO license.



The screenshot shows a web application interface with a sidebar on the left and a main content area on the right. The sidebar contains a menu with items: Resources, System Info, Network, Settings, Service, Security, File Browser, Logs, Password, Archives, and Licensing (which is highlighted). The main content area has a teal header bar with a hamburger menu icon, a logo, the word 'Licensing', and a list icon. Below the header, there are two main sections. The first section, titled 'Active Licence', displays 'Site ID' as 'Y6CE-8TTS-FXCL-MJQE-3865-UWU9-TP67-KZG7'. Below this, it states 'No active site keys available' and provides a link 'Get demo licence'. The second section, titled 'Configuration', has two tabs: 'Apply Voucher' (selected) and 'Apply Licence Keys'. Under the 'Apply Voucher' tab, there are input fields for 'Voucher' and 'Description for your reference', and an 'APPLY VOUCHER' button.

Click on [Get demo licence](#) and you will be redirected to the registration form. Identify yourself and you'll receive a DEMO licence key via e-mail. The licence key is called a **SiteKey**.

REXYGEN - Licensing

Use Voucher

DEMO Licence

Demo licence

If you have an account already, try to log in first.

Get demo licence

SitellD (hardware identifier of your device)*
Y6CE-8TTS-FXCL-MJQE-3865-UWU9-TP67-KZG7

Description (for your reference)
crush test machine

E-mail*
john.doe@domain.com

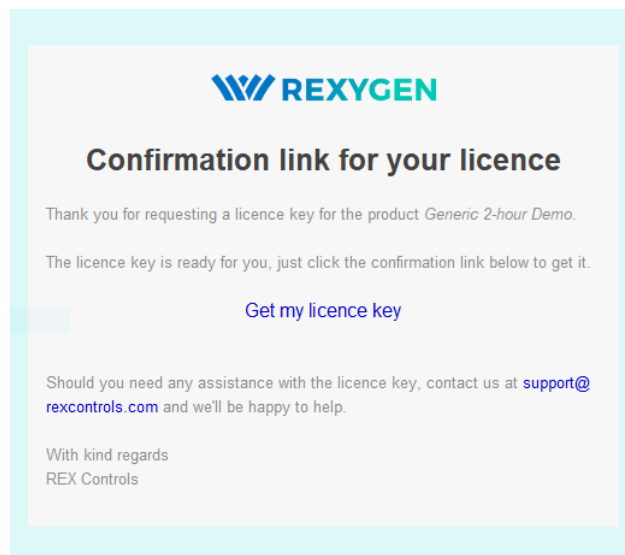
First name*
John

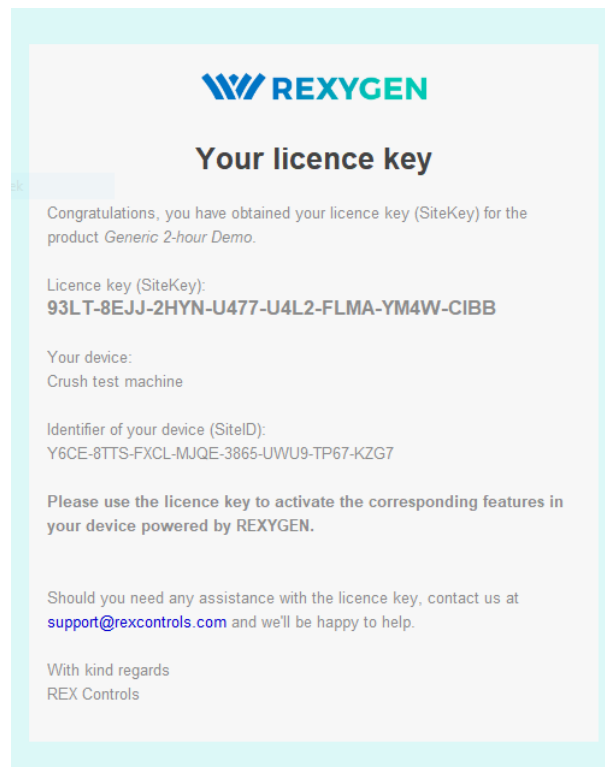
Last name*
Doe

I'm not a robot

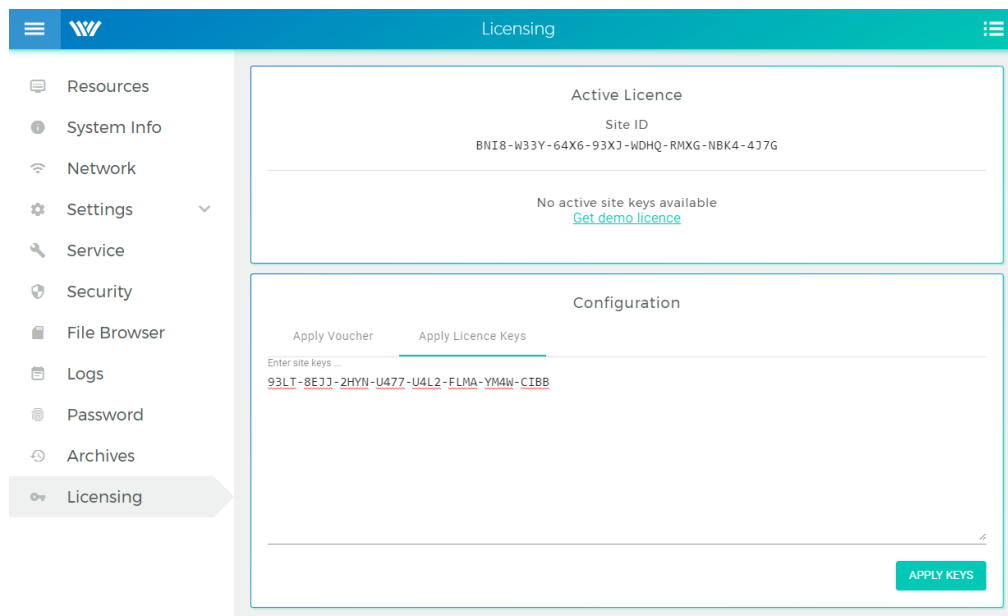
reCAPTCHA
Privacy - Terms

SUBMIT





Once you have your DEMO licence key (SiteKey), apply it in REXYGEN DWM by selecting Apply Licence Keys and clicking on Apply keys.



Evaluation version of RexCore (REXYGEN runtime core) is functional for 2 hours. It is possible to run your algorithm on the platform but you cannot store it permanently.

The algorithm resides only in the RAM memory therefore it will not run after a restart or power-up. You can use almost all function blocks, see [1]. The RexCore runtime core on the target device is terminated after 2 hours of operation in demo mode without any warning. After a restart, you have another 2 hours for your experiments.

2.2 Obtaining a permanent licence

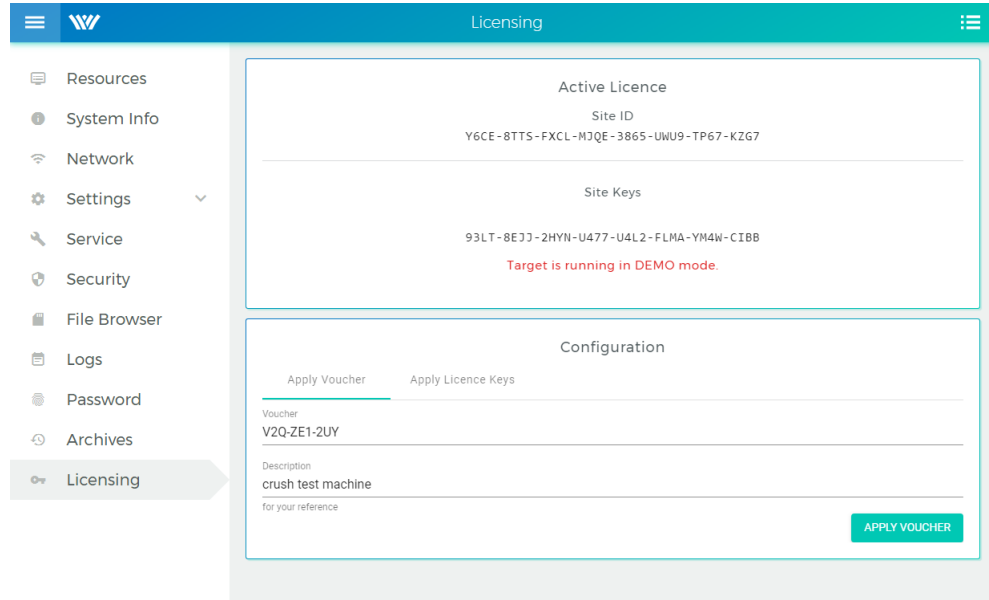
It is necessary to activate the RexCore runtime module and optional additional modules for permanent operation. This can be done using the licence, which you can obtain at

www.rexygen.com/pricing

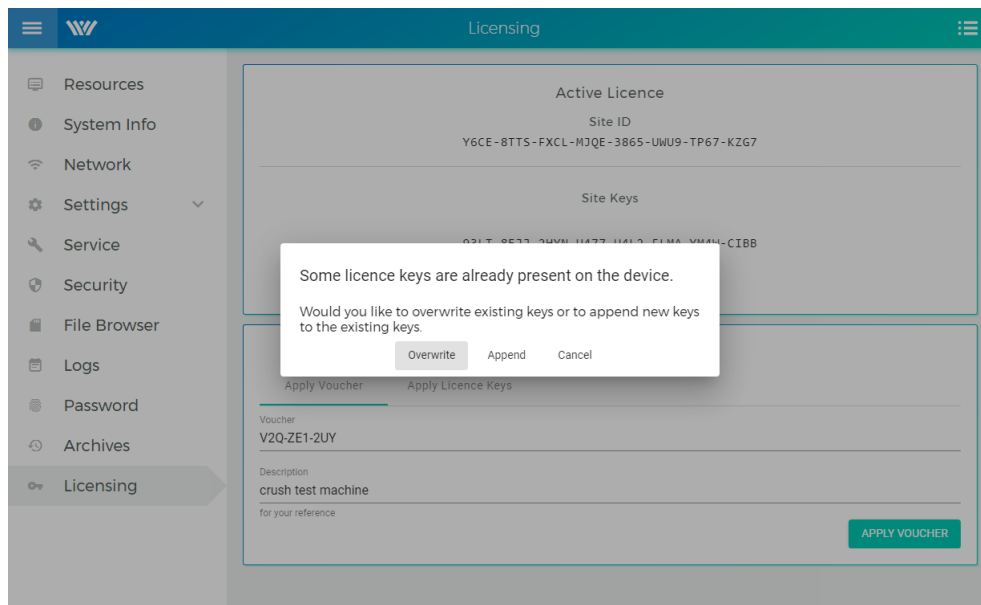
2.2.1 Activation of the permanent licence

Each device running the RexCore runtime module is identified by the so-called SiteID tag. The purchased licence is associated with the hardware device, i.e. with the SiteID tag.

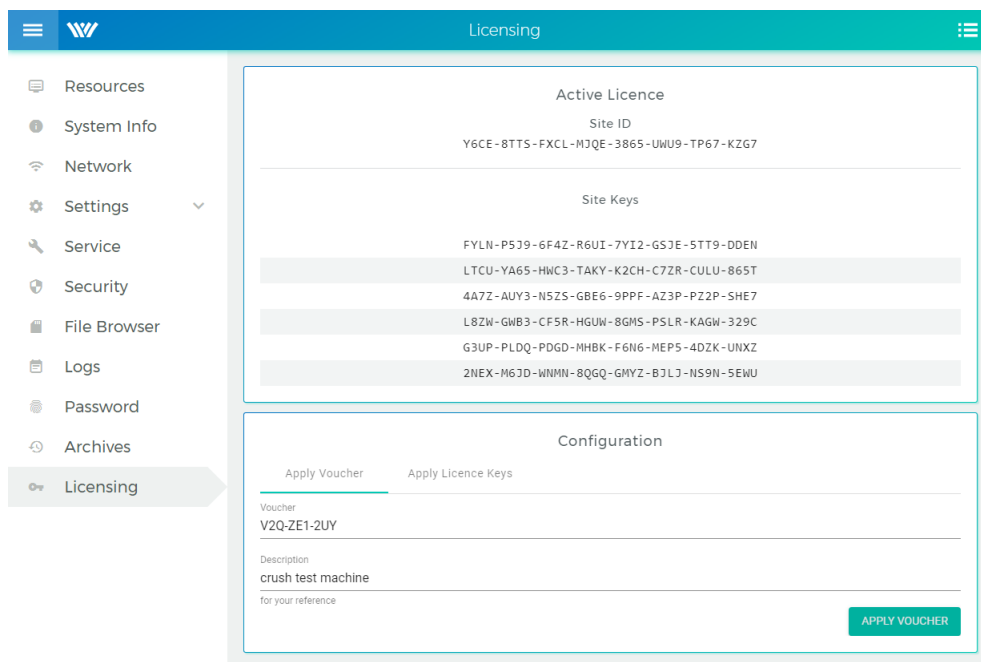
1. Open your favorite web-browser on the desktop PC and fill in the IP address of the platform. Once the DWM appears, select *Licensing* → *Apply Voucher* and enter your licence voucher code.



2. If other licenses are already present, a new window will appear where you can specify what should happen to the old licenses. Use the *Overwrite* option if the platform is running in DEMO mode. This is the last and irreversible step.



3. The so-called **SiteKey** licence key is generated from your licence voucher and it is stored in your device, which is shown in the *Active License* panel. The licence key allows permanent operation of the runtime core. It is highly recommended to check the licence again after a reboot of the device.



Chapter 3

Default REXYGEN project on Monarco HAT, Unipi Patron and Unipi Neuron

In order to help you speed up a start with REXYGEN and your platform we have create an example project for most Monarco HAT, Unipi Patron and Unipi Neuron platform models which is already preinstalled on the image with REXYGEN (installation is described in Section ??). The project serves as a basic validation of the installation process and as a starting point for more complex applications. One can control digital output(s) DO, analog output(s) AO, observe the state of digital inputs(s) DI and analog input(s) AI. These general inputs and outputs are present on all platform models. The steps to create and develop a new project from scratch is described in Chapter 4 in detail.

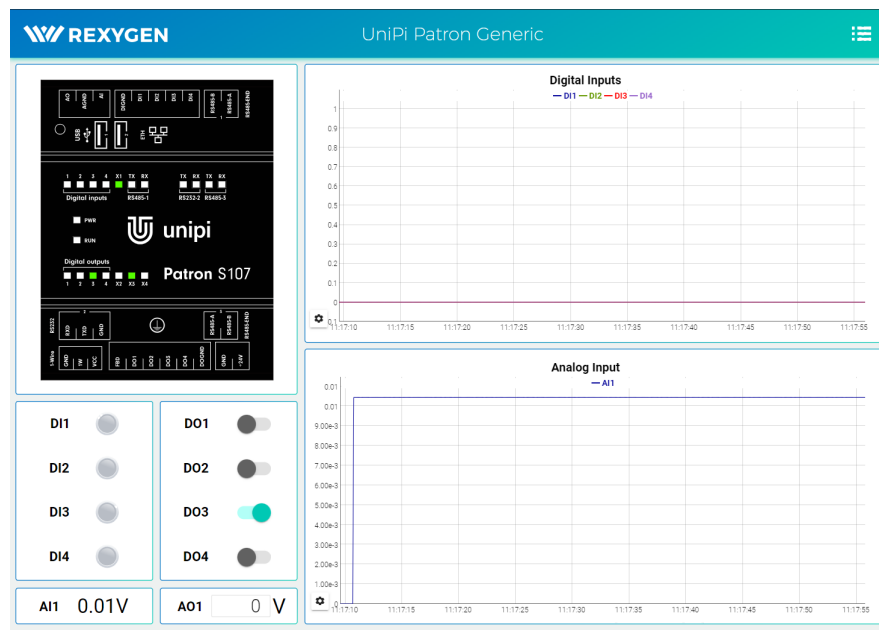
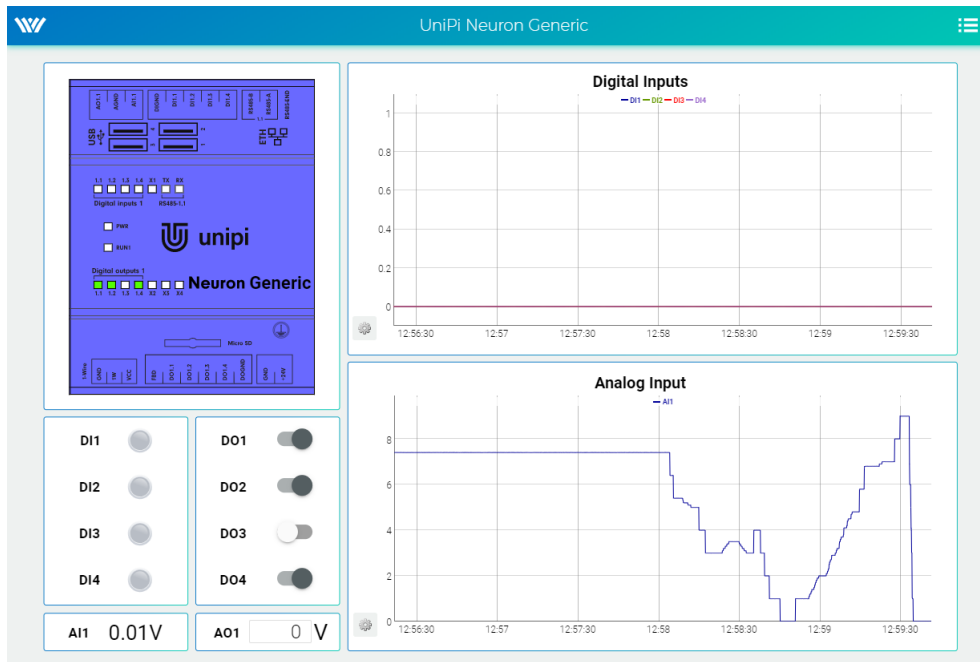
IMPORTANT: If you have valid permanent licence stored on your platform, this project will start automatically once RexCore (REXYGEN runtime core) starts. Otherwise, if you have only a Demo license, you must compile and download the project from the REXYGEN Studio on the platform first. The project can be opened in the REXYGEN Studio using either the procedure described in Section 3.3, or the project can also be found in the Examples library as 0126-02_Unipi_Neuron_Generic for Unipi Neuron, code0127-02_Unipi_Patron_Generic for Unipi Axon/Patron and 0121-09_Monarco_HAT_Demo_Example for Monarco HAT¹. The process of compiling and running the project is described in Section 4.2.

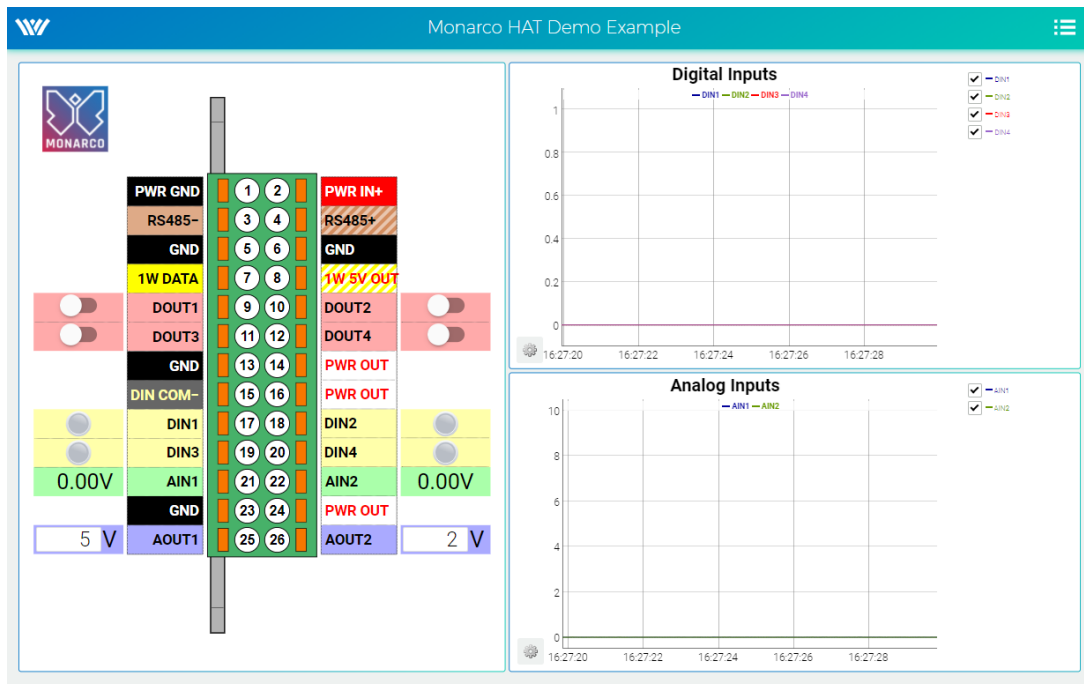
3.1 Control the platform from HMI

The project contains graphical user interface (so-called **H**uman-**M**achine-**I**nterface) for easy control and observing of general outputs and inputs. The HMI can be found at URL

¹All examples which are part of the installation are marked by an ExampleID. The most up-to-date examples are available with the latest installation of development tools or at <https://www.rexygen.com/example-projects/>

address <http://192.168.1.100:8008/hmi/index.html> (replace 192.168.1.100 with the IP address of your platform). You can see how the HMI looks for default project on Unipi Neuron, Unipi Patron and Monarco HAT right below.



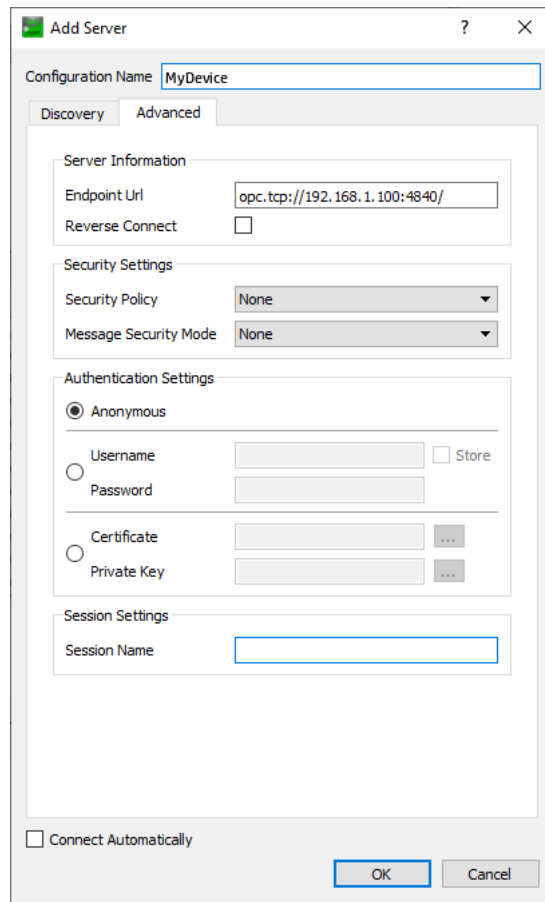


3.2 Control the platform through OPC UA

You can use the OPC UA interface to control your platform too. Install any OPC UA Client and connect to the OPC UA Server, which is running right now on your platform. There is the *UAExport* software used in this tutorial:

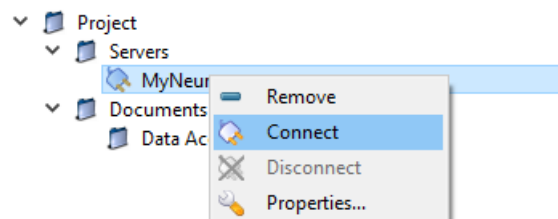
<https://www.unified-automation.com/downloads/opc-ua-clients.html>.

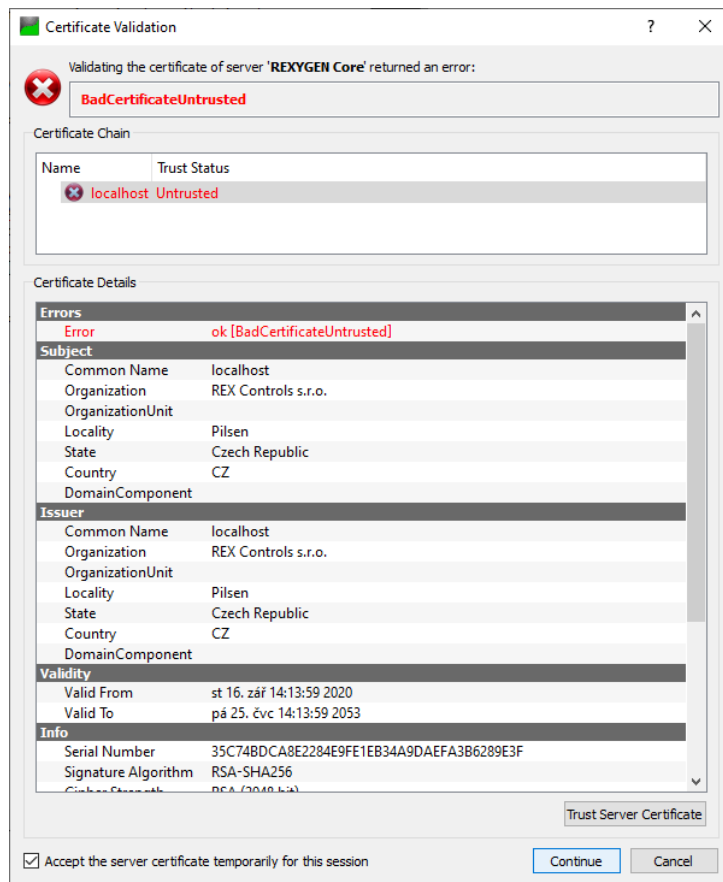
Click on *Server* in the Menu → *Add* → *Advanced mode* and fill the *Configuration Name* and the *Endpoint URL* (replace 192.168.1.100 with the IP address of your platform).



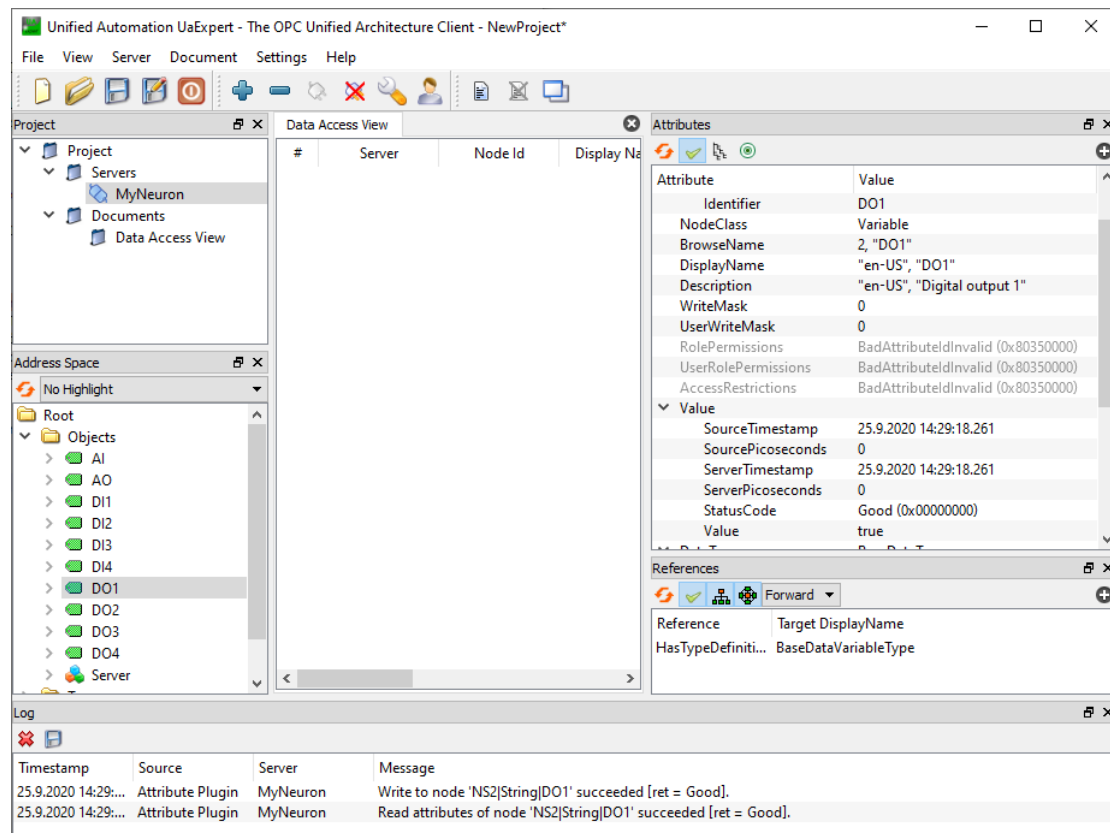
The 'Add Server' dialog box is shown with the 'Configuration Name' field set to 'MyDevice'. The 'Discovery' tab is selected, and the 'Advanced' tab is also visible. The 'Server Information' section contains the 'Endpoint Url' field with the value 'opc.tcp://192.168.1.100:4840/' and the 'Reverse Connect' checkbox, which is unchecked. The 'Security Settings' section has 'Security Policy' and 'Message Security Mode' both set to 'None'. The 'Authentication Settings' section has 'Anonymous' selected, with 'Username' and 'Password' fields and a 'Store' checkbox. The 'Certificate' and 'Private Key' fields are also present. The 'Session Settings' section has a 'Session Name' field. At the bottom, there is a 'Connect Automatically' checkbox and 'OK' and 'Cancel' buttons.

After confirmation (*OK*), right-click on the new server name in the *Project* panel and choose *Connect*.





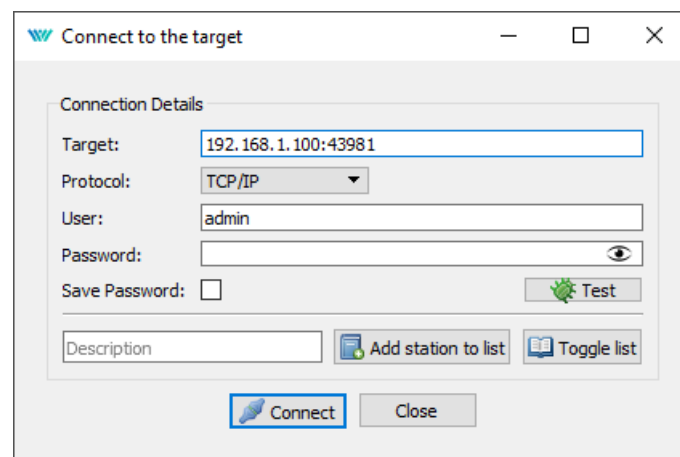
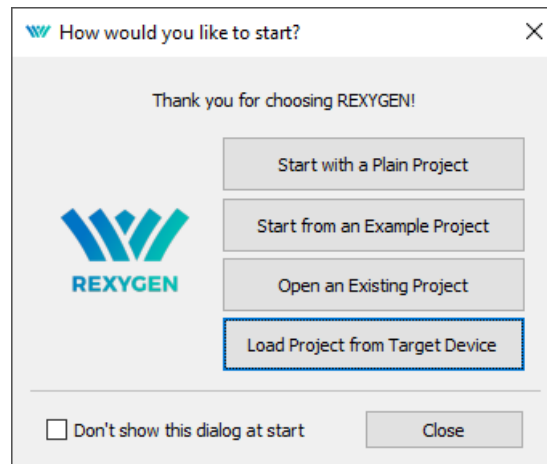
Congratulations, you are now connected to your platform! You can now set the DO1 to value *true* for example. Navigate to *Address Space* panel and select DO1. In *Attributes* panel search *Value* → *Value*, double-click on it, check the radio box and hit Enter. The first Digital outputs LED diode on the platform should glow. Detailed tutorial on using OPC UA with REXYGEN is there [2].



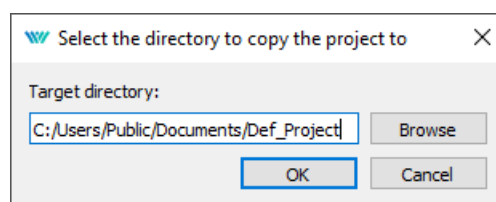
3.3 Loading project from the platform to REXYGEN Studio

After installation of REXYGEN development tools (described in Chapter ??), you can open the REXYGEN Studio on your PC and download algorithm of this default project from your platform.

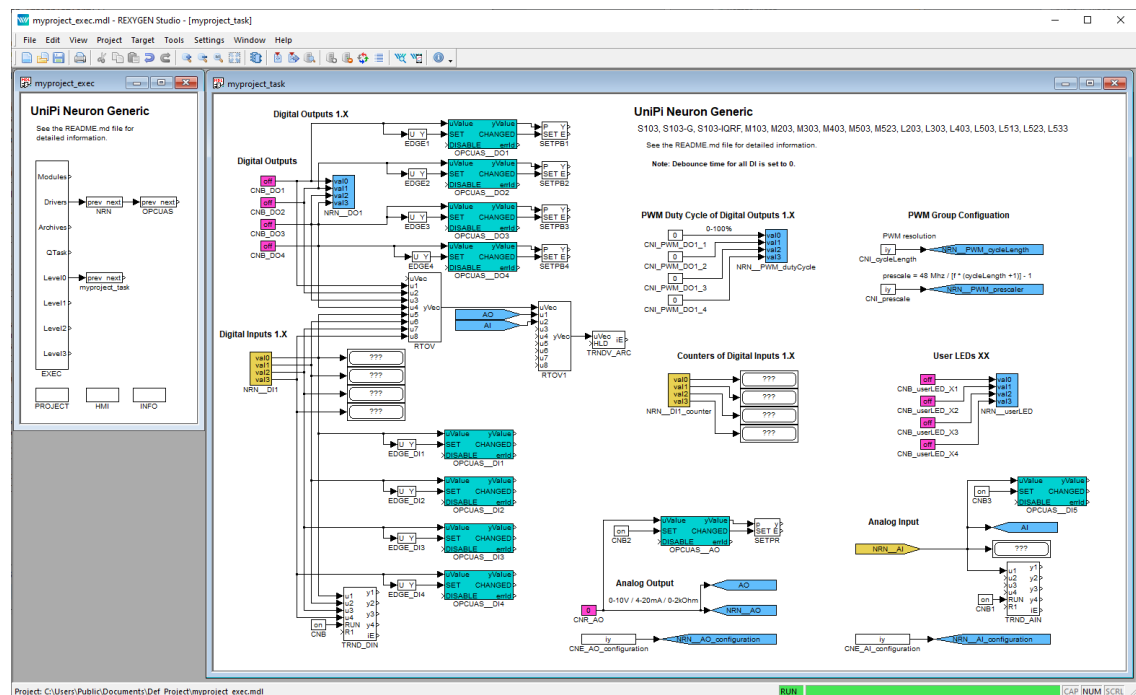
Select *Load Project from Target Device* from starting dialog or from *File* → *Open Project from Target Device* and connect to your platform (replace 192.168.1.100 with the IP address of your platform).



Choose the directory where will be the project stored on your PC and hit *OK*.



If everything went well, the project algorithm will appear (example image of Unipi Neuron project).



Chapter 4

Configuration, compilation and execution

The process of creating a control algorithm will be demonstrated on a very simple example with four Boolean variables representing manual switches. In Chapter ??, two of them will be replaced by physical inputs of the platform. A software timer will be used for measuring the time when the variables are true (i.e. the switches are in the ON position). A Boolean signal will indicate that the interval of predefined length has elapsed.

4.1 Creating a new project

The project configuration is created using the REXYGEN Studio program. Each project consists of at least two `.mdl` files. The first file is the main file of the project, which is used for configuration of tasks, drivers, priorities and timing. The other file(s) contain the individual control algorithms (tasks).

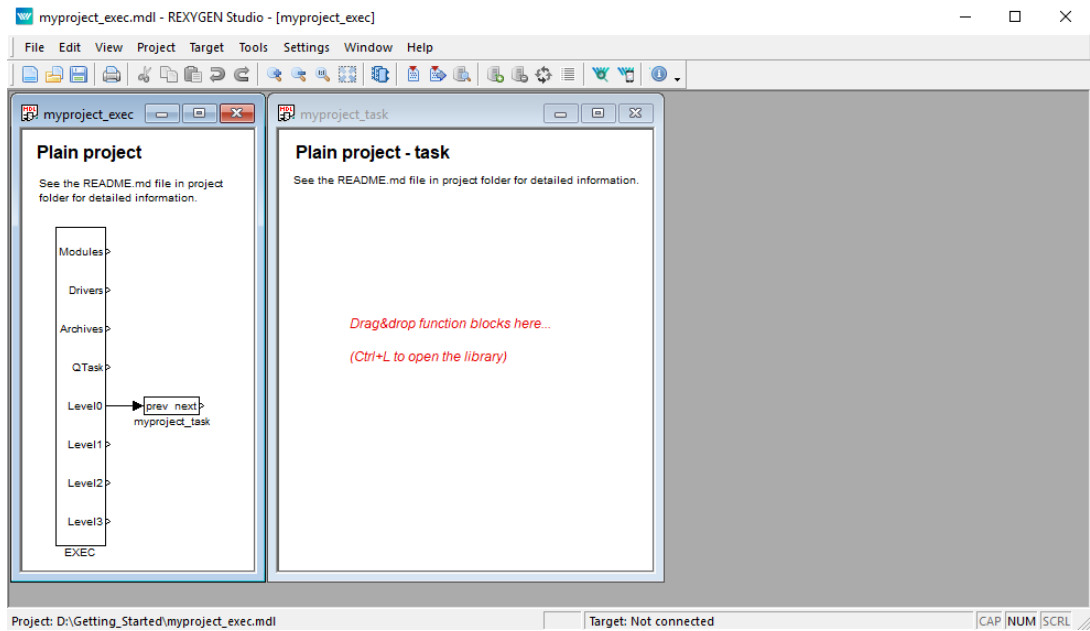
First we'll create the example 0101-01 from scratch¹.

Standard approach:

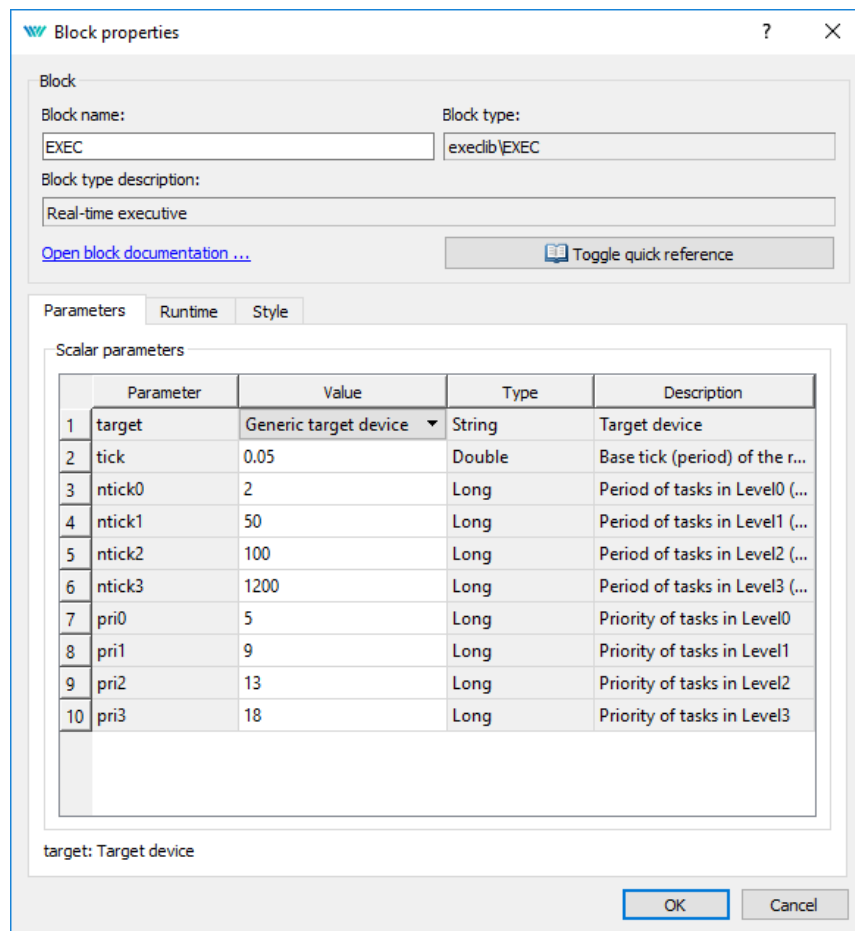
1. Run the REXYGEN Studio program. Start with a plain project and select a folder to save the project files in (e.g. `D:\GettingStarted`).
2. The folder will contain two important files:
 - `myproject_exec.mdl`
 - `myproject_task.mdl`


¹All examples which are part of the installation are marked by an ExampleID. The most up-to-date examples are available with the latest installation of development tools or at <https://www.rexygen.com/example-projects/>

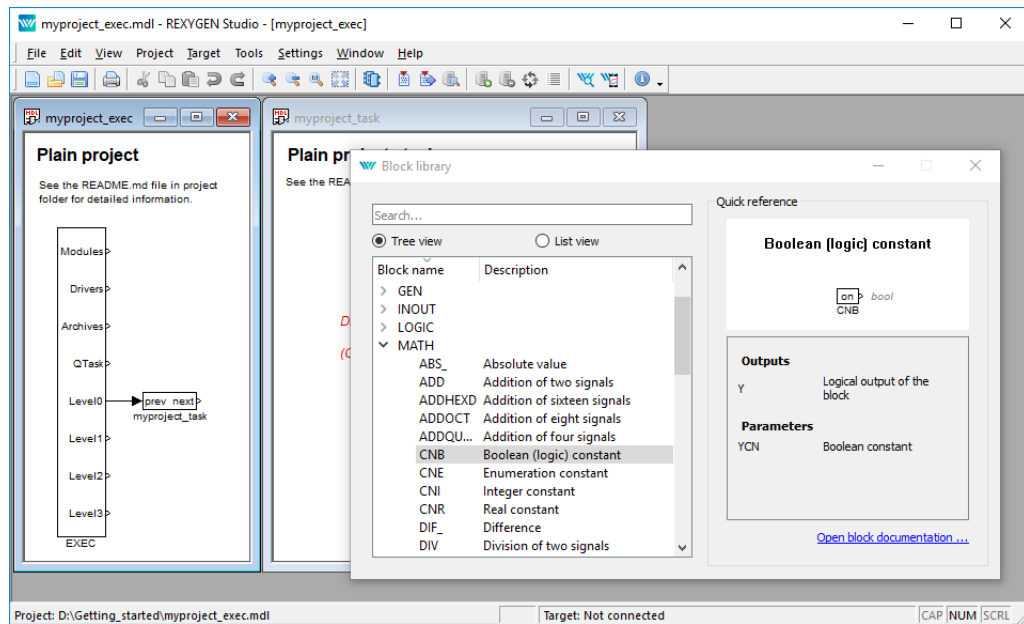
3. The `myproject_exec.mdl` is the project main file. It contains one `EXEC` block from the `EXEC` library. The other block is the `TASK` block from the same library and it is renamed to `myproject_task` to reference the second file of the project (`myproject_task.mdl`), which will contain the algorithm (the so-called task).



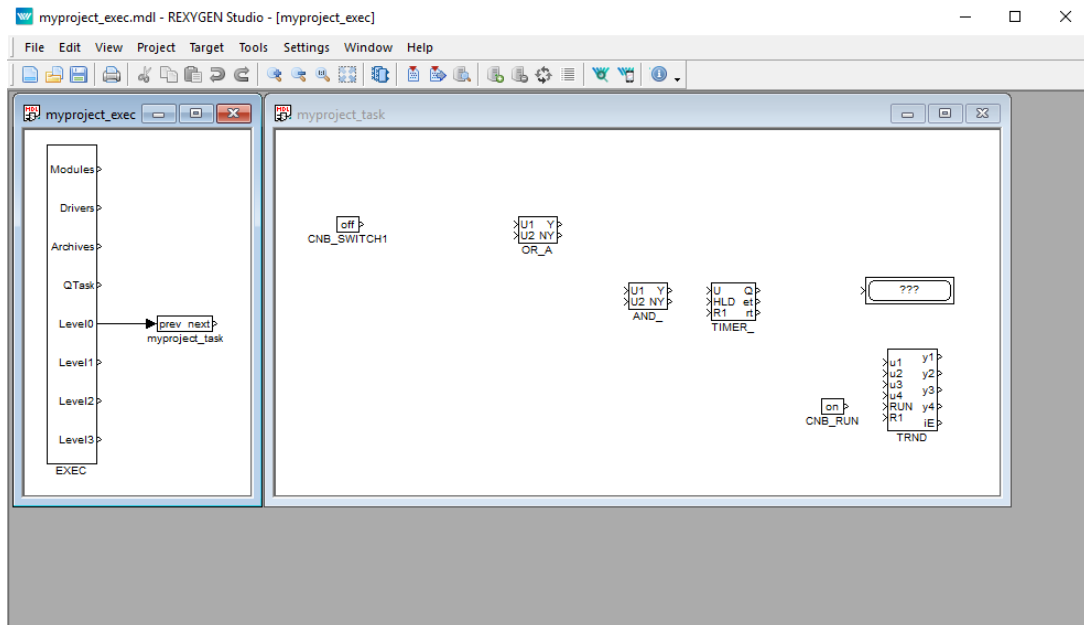
4. The task is connected to the `Level0` output of the `EXEC` block and therefore its timing is defined by `tick` and `ntick0` parameters of the `EXEC` block.
5. The `EXEC` block (and any other block) can be configured by double-clicking on it. A block parameters and properties dialog appears. The parameters of all blocks of the REXYGEN system are described in the Help (press the F1 key) and in the Block reference manual [1].



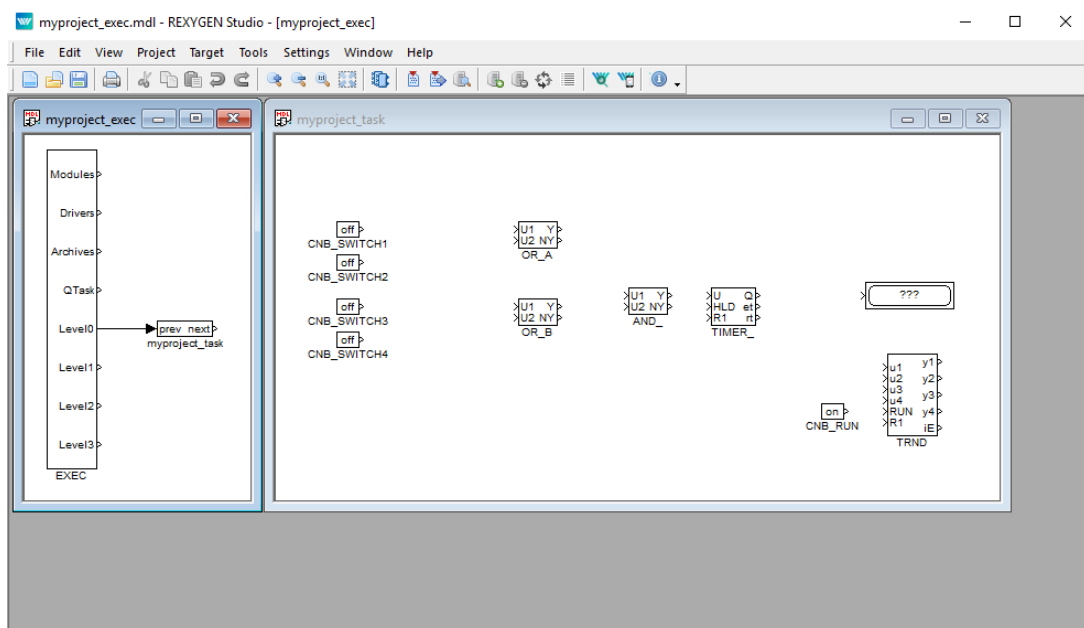
6. Note that `tick=0.05` and `ntick0=2`, therefore the task will run each 100 milliseconds ($0.05 \cdot 2 = 0.1s$). There is no need to change any parameter at the moment. Close the dialog.
7. You can delete all the descriptive texts in project files. These have no effect on the functionality and can be considered programmer's comments.
8. Open **Block Library**, choose *View/Block Library* in the menu or use the  icon from the toolbar.
9. By default, the library is in *Tree view* mode where the blocks are organized in sub-libraries. Their location is always denoted as **sublibrary/block**, e.g. **LOGIC/AND** for the logical **AND** block in the **LOGIC** sublibrary. Inside a sublibrary, the blocks are ordered in alphabetical order.



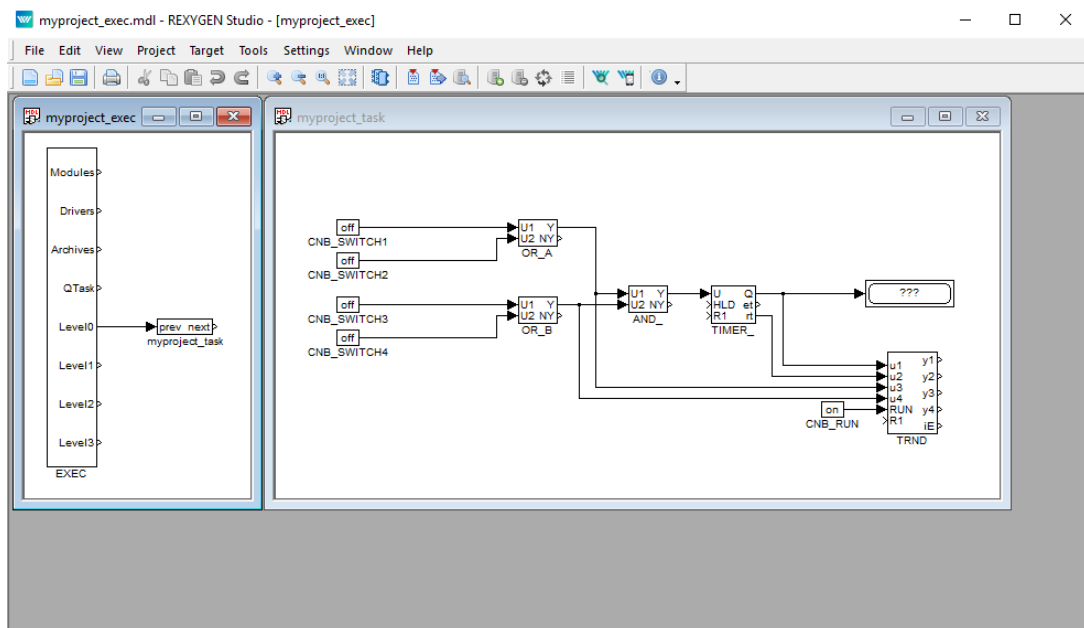
10. You can also switch the library to *List view* mode, where all the blocks are sorted alphabetically, regardless of the sublibrary they belong to.
11. Locate the following function blocks in the **Block Library** and drag them to the task file:
 - **MATH/CNB** – constant of type **Boolean**. Once dropped, double-click its name and change it to **CNB_SWITCH1**. Double-click the block and set parameter **YCN** = **off**.
 - **LOGIC/OR_** – logical OR. Rename it to **OR_A**.
 - **LOGIC/AND_** – logical AND.
 - **LOGIC/TIMER_** – a timer block. Set parameter **mode** = 2: **Delayed ON**, **pt** = 5.0.
 - **INOUT/Display** – a display to show values in real-time.
 - **ARC/TRND** – real-time recording. Set parameters **l** = 2000, **Title** = **My timer**, leave the default values otherwise.
 - **MATH/CNB** – constant of type **Boolean**, change name to **CNB_RUN**, set parameter **YCN** = **on**.



12. Duplicate the CNB_SWITCH1 block with right mouse button dragging. Or simply Copy&Paste the block.
13. Duplicate the block 2 more times.
14. Duplicate also the OR_A block. Rename the duplicate to OR_B.




15. Connect the blocks as shown below. To connect the blocks, drag the output arrow of one block to the input arrow of the other block using the left mouse button. The connection will be established when the line goes bold and green. After releasing the mouse button you can recognize a successfully connected line by its style. A full line terminated by a full arrow at the input of the connected block indicates a valid connection. A dashed red line ending with a thin arrow indicates an unconnected line. New branch of an existing line can be created by dragging an existing line with the right mouse button.

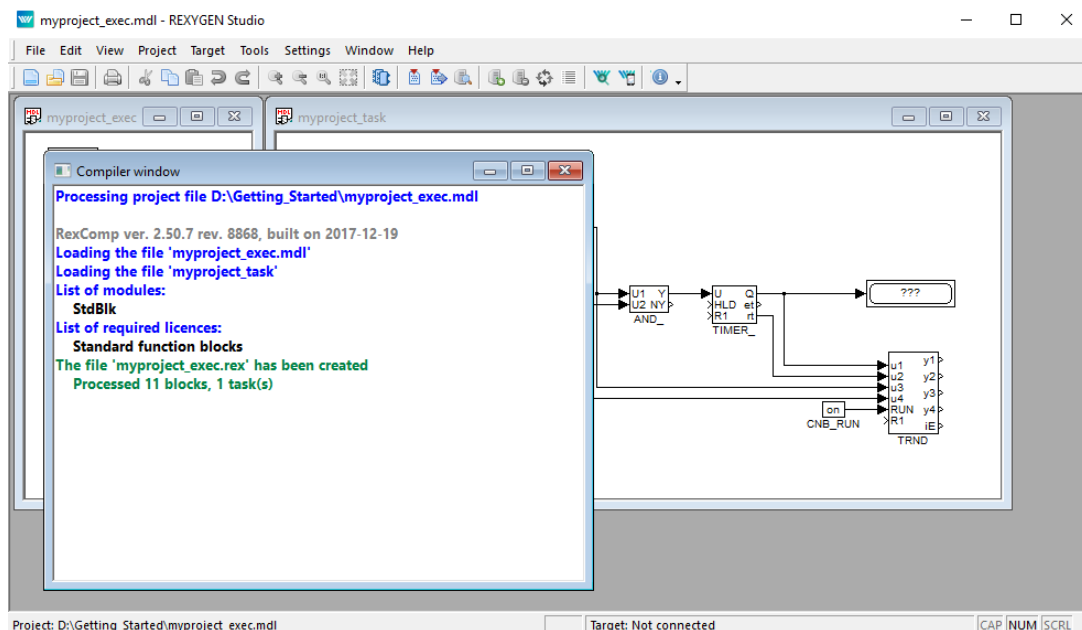



At this moment the executive configuration `myproject_exec.mdl` and the corresponding `myproject_task.mdl` file with the algorithm are ready. The algorithm will be evaluated in the direction of the arrows, starting from the source CNB blocks, passing through the OR_, AND_ and TIMER_ blocks and finishing at the Display and TRND blocks.

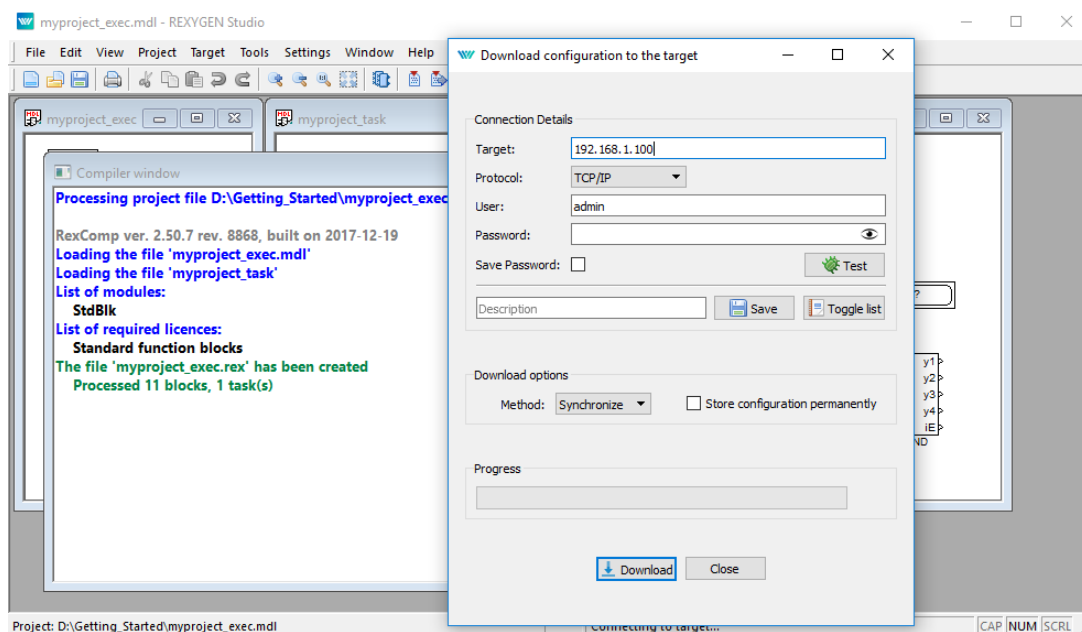
Congratulations, your first project is ready for compilation!

4.2 Compiling and running a project

The developed algorithm must be compiled to binary form prior to deploying. Pick *Project/Compile* from the menu or use the  icon from the toolbar. The compiler output is displayed in the **Compiler** window. If no error is found, the `myproject_exec.rex` file is created.



At this moment it is possible to deploy the control algorithm to the target platform. Use *Project/Compile and Download* in the menu or click the **Compile and Download** icon  for this purpose. A dialog for defining the target device appears upon successful compilation.



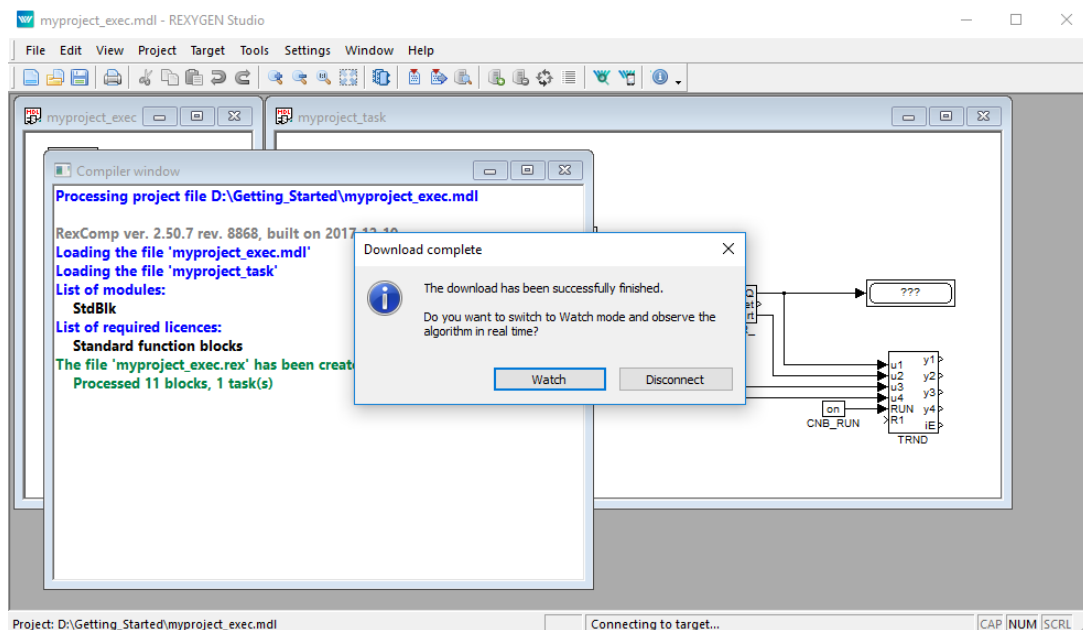
Enter the IP address of your platform in the **Target** field ².

²If you use the WAGO PFC100/200 and you do not know the IP address of your platform, see

Enter REXYGEN login and password. The default user is **admin** and there is **no password** by default. Leave the other elements intact and click **Download**.

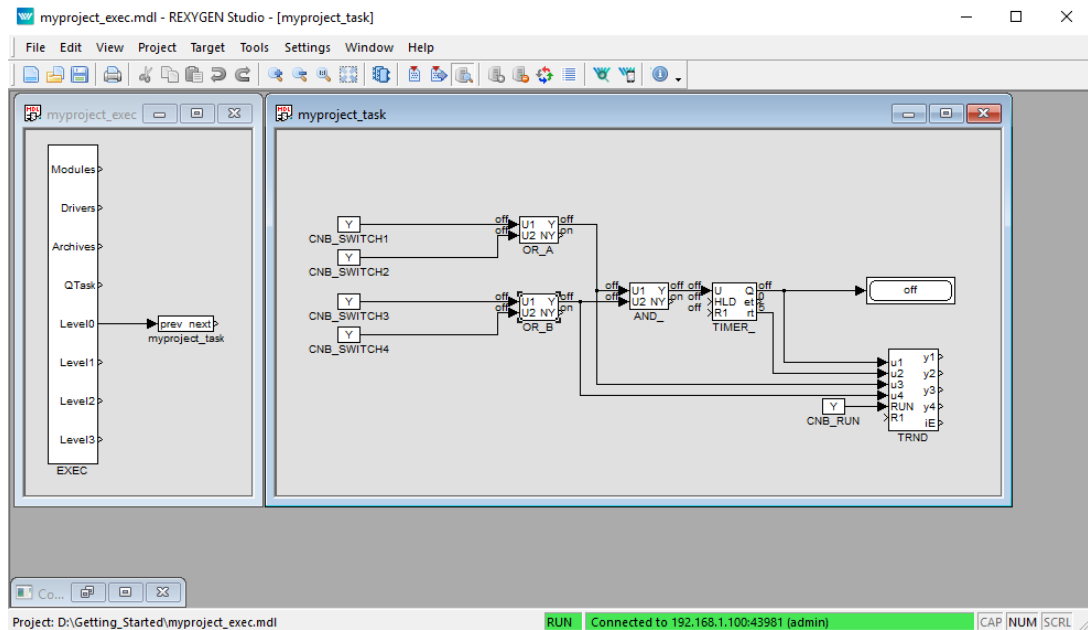
If there is no licence on your platform, you need to get one first. You can get a **DEMO** licence for free. See [Appendix B](#) for details and come back afterwards.

As soon as the download is complete it is possible to switch the REXYGEN Studio application to the so-called *Watch mode* and watch the control algorithm in real-time – click **Watch**.

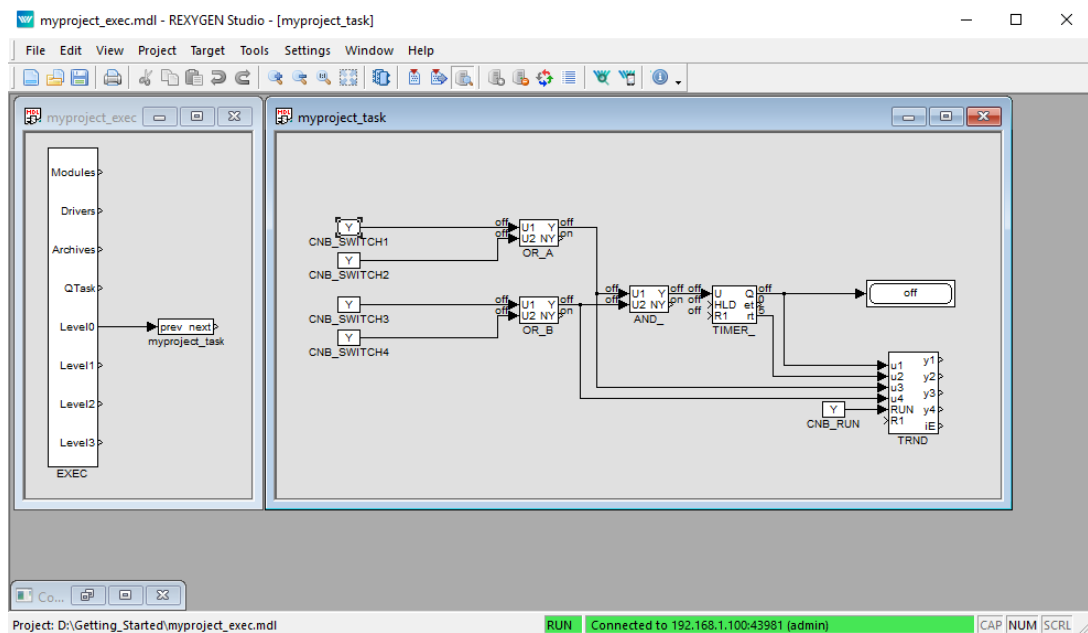


In the *Watch mode*, the background of all files goes gray and you cannot move or delete any blocks or connections. Right-click the **TIMER_** block and select *Watch selection* in the menu to watch the inputs and outputs of the timer.

[Appendix C](#) for details. Once you know it, come back to this point.



You can do the same with the `OR_` and `AND_` blocks (or any other selection).

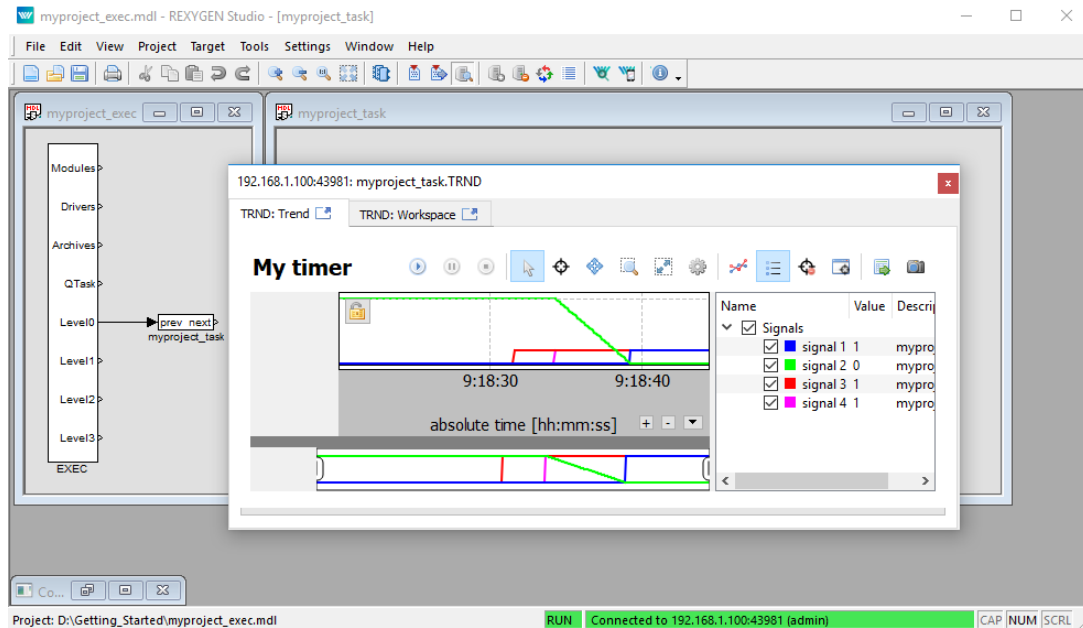


Now it is possible to double-click the `CNB_SWITCH1` block and change the Boolean variable to `YCN = on` (tick the checkbox and click OK). Once you do the same with the `CNB_SWITCH3` block, the outputs of both `OR` blocks are `on` and the `Y` output of the `AND_` block goes `on` and the `TIMER_` starts to count down. Observe the `rt` output.³ Once the


³Do not get confused by the default 1 second refresh rate of the *Watch mode*. The algorithm on the target device runs each 100 milliseconds as mentioned earlier.

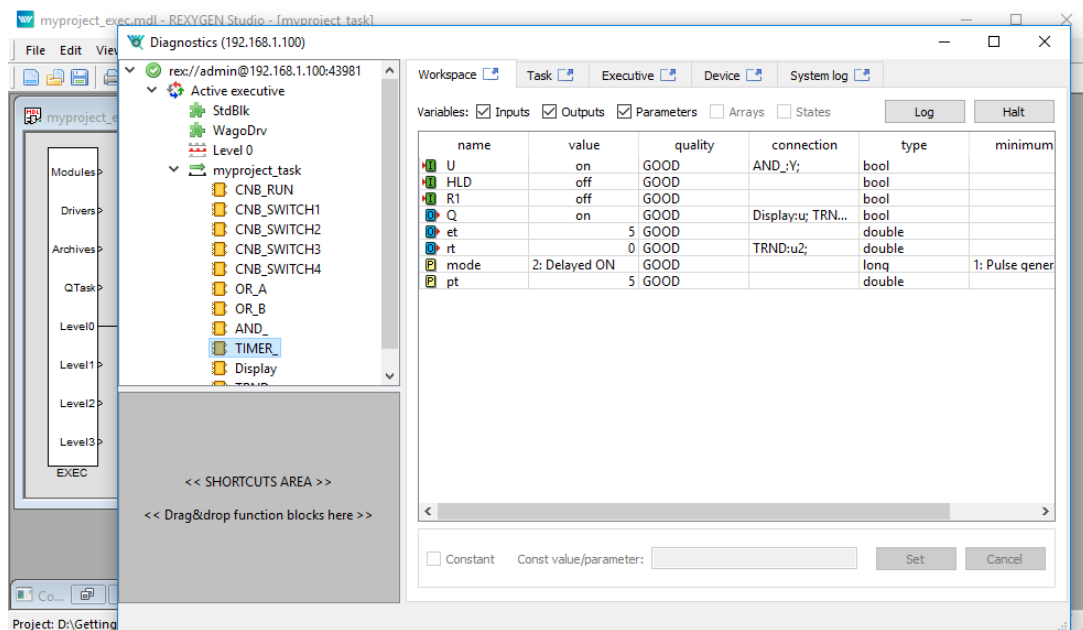
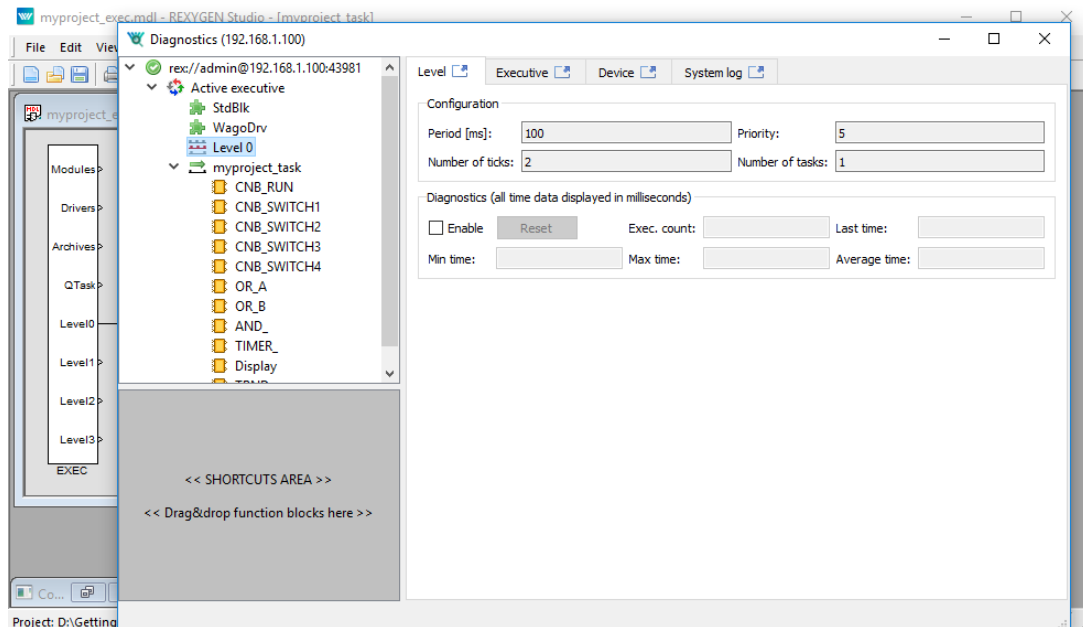
timer reaches zero, its output Q is set to on and it remains on as long as the U input is on.


You can double-click the TRND block to see the signals in a real-time graph. The red line is the output of the OR_A block, the magenta line is the output of the OR_B block, the green line is the remaining time of the timer and the blue line is the Boolean output of the timer.



Try turning the CNB blocks off and change the pt parameter of the $TIMER_block$. Afterwards turn the CNB blocks on again and observe the signals in the TRND block again. As you can see, you can modify any parameter in real-time, which allows you to fine tune your algorithm.

It is also possible to open a **Diagnostics** view of the algorithm. Pick *Target/Diagnostics* from the menu or click the  icon and you will see the algorithm in a tree view which allows you to monitor the control algorithm in full detail. You can verify that the sampling rate of your algorithm is indeed 100 milliseconds. You can also adjust parameters of individual function blocks, which has the same effect as modifying them directly in the *Block properties* dialog.



Now you can switch REXYGEN Studio back to the *Development mode*. You can do so by deactivating the *Watch mode* (use the  icon). You are offered synchronization of the changed parameters with the source files of the project, choose *No* at this moment.

All changes made while in the *Watch mode* are not permanently stored in the target device (unless you decide so, see [3]). Upon restarting the RexCore runtime module the

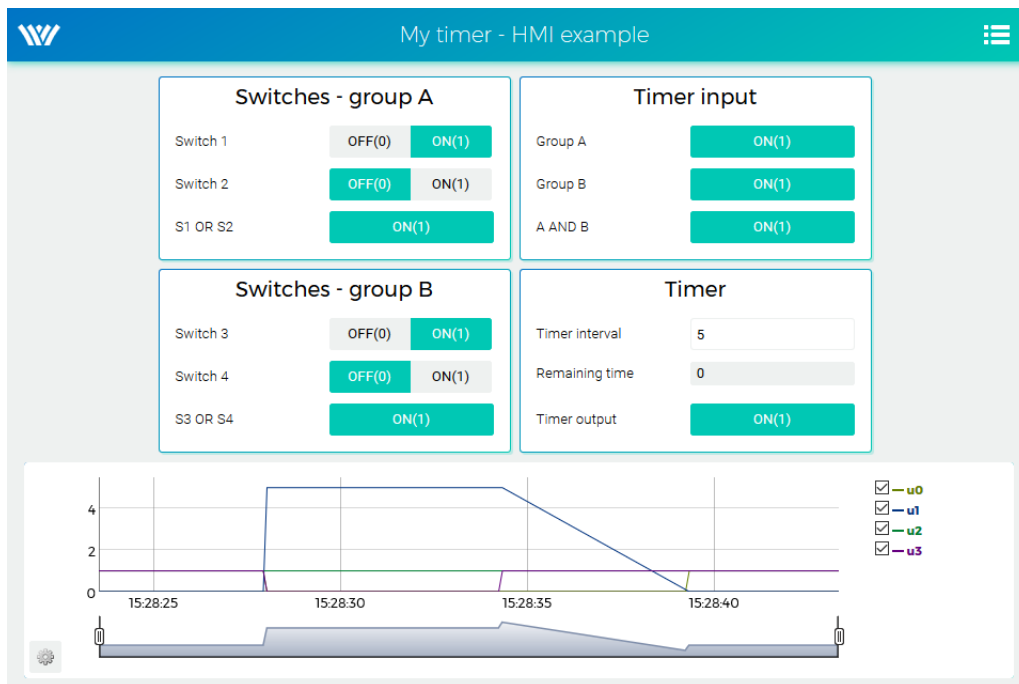
algorithm will start with the parameters defined in the project source files, which were valid when compiling and downloading the algorithm to the target device. To apply the changes permanently, you have to transfer the changes to the source files and *Compile and download* the project one more time which defines new startup values.

4.3 Adding a user interface (HMI)

The next step in developing a control algorithm is its user interface, or HMI, **H**uman-**M**achine **I**nterface. It allows anyone (even those who are not familiar with the REXYGEN system) to interact with the algorithm. The HMI of the REXYGEN system relies on modern web-based technology and the HMI is therefore accessible via web browser on desktop PC, tablet or smartphone.

In this tutorial, a simple HMI will be created using the so-called WebBuDi technology. It provides very simple indicators and input elements to interact with the control algorithm via a web page (Web Buttons and Displays).

The steps to create the HMI are described below. This is how the HMI will look like in the end:



1. In the folder with the project files, create a `hmisrc` subfolder. Inside this folder, create a file named `index.hmi.js` and edit it with your favorite text editor. The content should be the following:

```
REX.HMI.init = function(){
```

```

//Indicators and virtual switches - group A
var switchesA = {
  column: 1,
  title: 'Switches - group A',
  rows: [
    {type: 'DW', alias: 'switch1', desc: 'Switch 1',
     cstring: 'myproject_task.CNB_SWITCH1:YCN'},
    {type: 'DW', alias: 'switch2', desc: 'Switch 2',
     cstring: 'myproject_task.CNB_SWITCH2:YCN'},
    {type: 'DR', alias: 'S1orS2', desc: 'S1 OR S2',
     cstring: 'myproject_task.OR_A:Y'},
  ]
};
REX.WebBuDi.addSection(switchesA);

//Indicators and virtual switches - group B
var switchesB = {
  column: 1,
  title: 'Switches - group B',
  rows: [
    {type: 'DW', alias: 'switch3', desc: 'Switch 3',
     cstring: 'myproject_task.CNB_SWITCH3:YCN'},
    {type: 'DW', alias: 'switch4', desc: 'Switch 4',
     cstring: 'myproject_task.CNB_SWITCH4:YCN'},
    {type: 'DR', alias: 'S3orS4', desc: 'S3 OR S4',
     cstring: 'myproject_task.OR_B:Y'},
  ]
};
REX.WebBuDi.addSection(switchesB);

//Timer input
var timerInput = {
  column: 2,
  title: 'Timer input',
  rows: [
    {type: 'DR', alias: 'inputA', desc: 'Group A',
     cstring: 'myproject_task.AND_:U1'},
    {type: 'DR', alias: 'inputB', desc: 'Group B',
     cstring: 'myproject_task.AND_:U2'},
    {type: 'DR', alias: 'AandB', desc: 'A AND B',
     cstring: 'myproject_task.AND_:Y'},
  ]
};
REX.WebBuDi.addSection(timerInput);

```

```

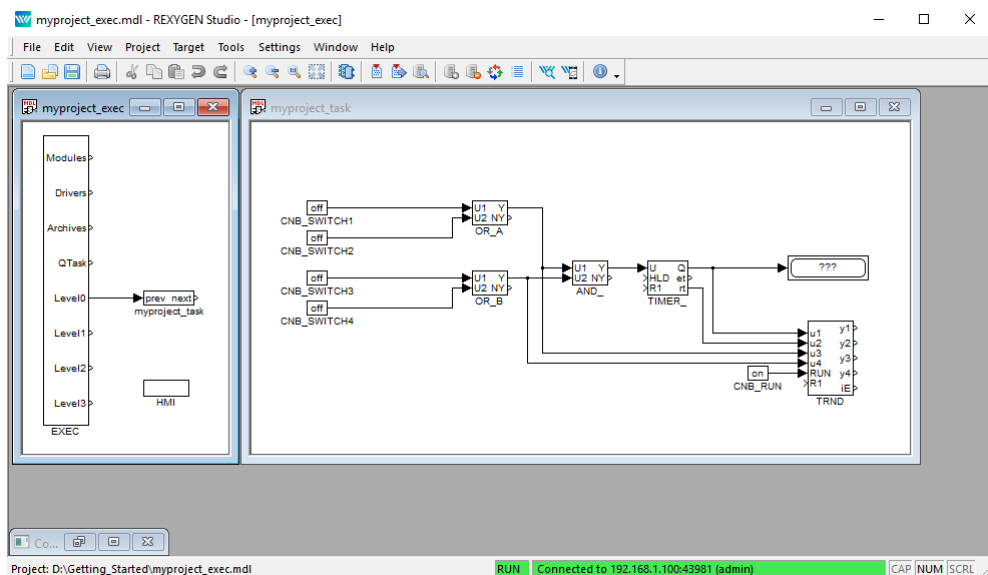
//Timer settings and status
var timer = {
  column: 2,
  title: 'Timer',
  rows: [
    {type: 'AW', alias: 'interval', desc: 'Timer interval',
      cstring: 'myproject_task.TIMER_pt'},
    {type: 'AR', alias: 'rt', desc: 'Remaining time',
      cstring: 'myproject_task.TIMER_rt'},
    {type: 'DR', alias: 'timerQ', desc: 'Timer output',
      cstring: 'myproject_task.TIMER_Q'},
  ]
};
REX.WebBuDi.addSection(timer);

//Add real-time trend
REX.HMI.Graph.addTrend({cstring: 'myproject_task.TRND'});
REX.HMI.Graph.setMaxBufferSize(200);

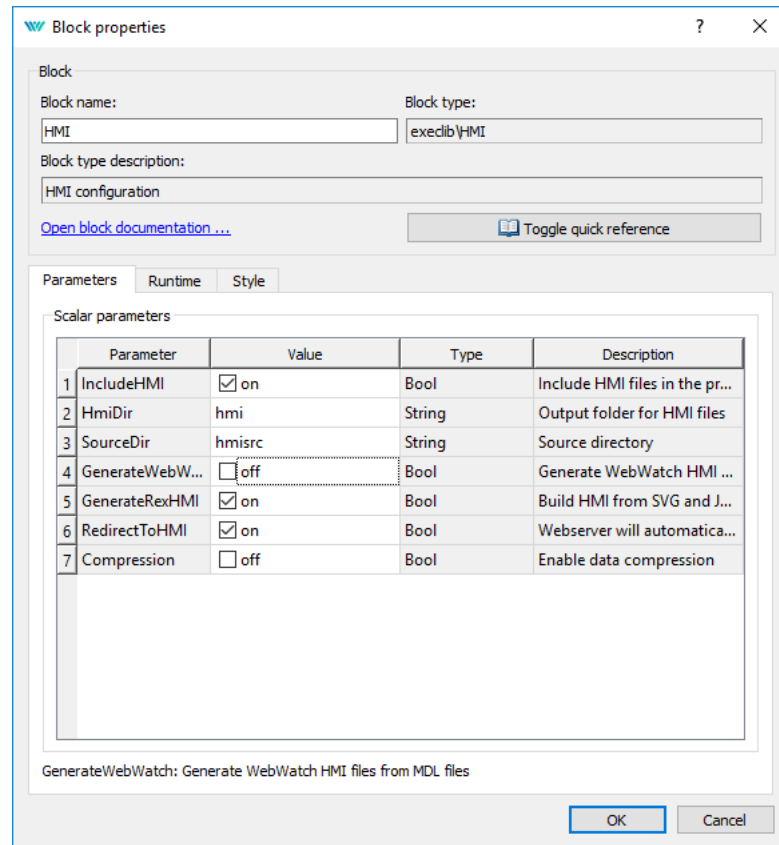
// Change title of the page
REX.HMI.setTitle('My timer - HMI example');
}

```

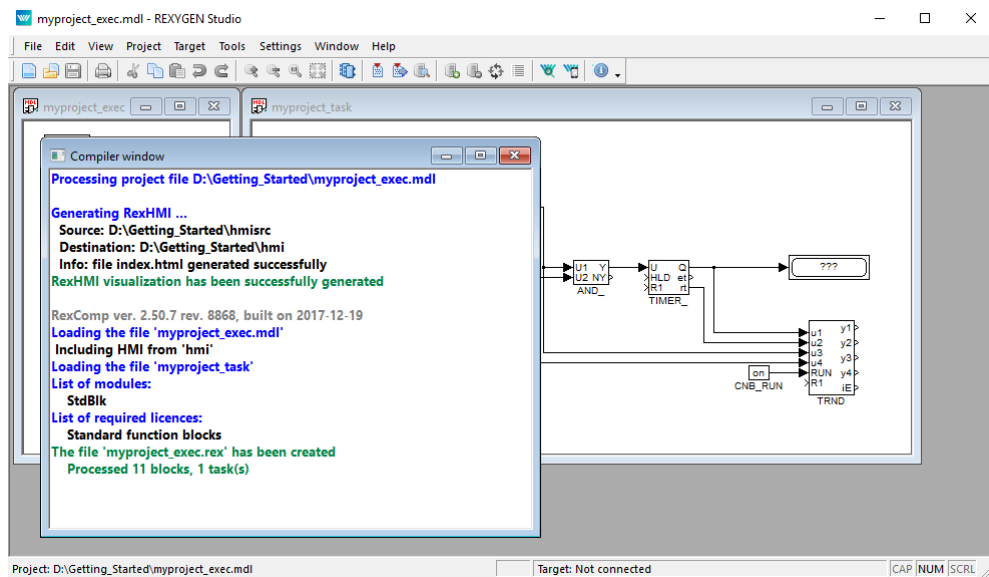
2. This file will be processed when compiling the project. However, it is necessary to add the EXEC/HMI block into the project main file first.



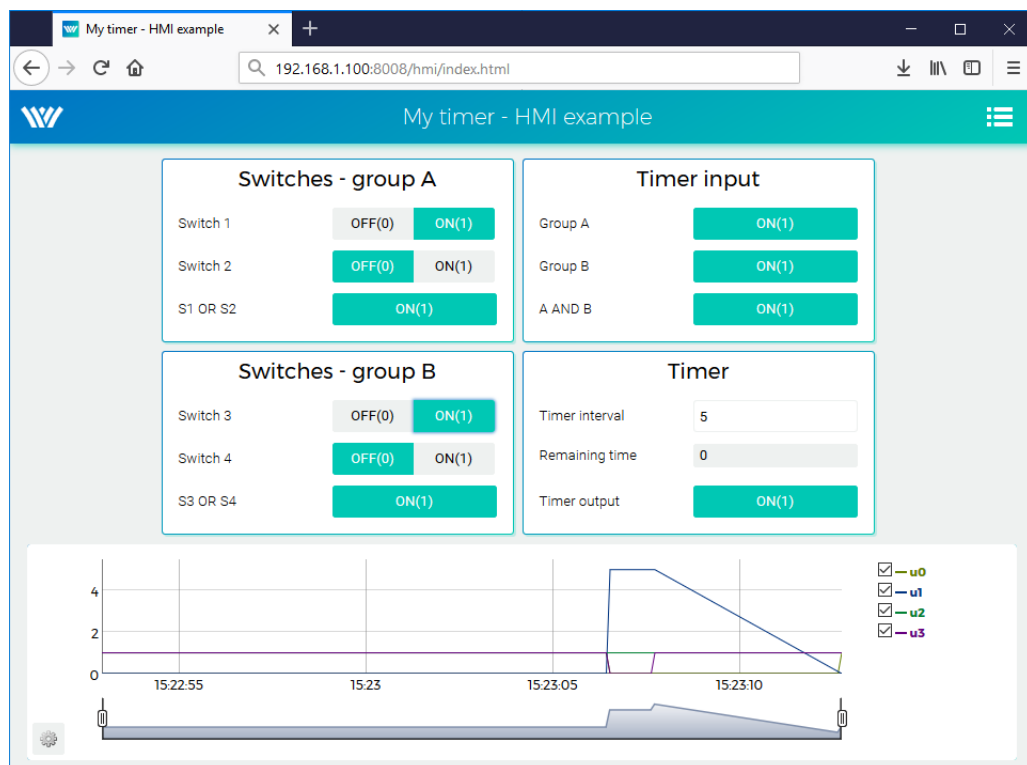
3. Double-click the HMI block to edit its parameters. Set `GenerateWebWatch = off` and confirm. WebWatch is another type of HMI, which you do not need at the moment. See [4] for details, it is a very interesting tool for developers and technicians.



4. The HMI is now an integral part of your project. Compile the project again and you will see that the compile log contains more information. The `index.html` file is generated from the source `index.hmi.js` file. All the HMI files are generated into the `hmi` subfolder (HTML, JS and CSS files) and included in the resulting binary `myproject_exec.rex` file.



5. After you download the project to the target device, you can access the HMI via web browser. Go to menu *Target/Web Interface* which will open the webpage. Remember the default login credentials: admin with no password.

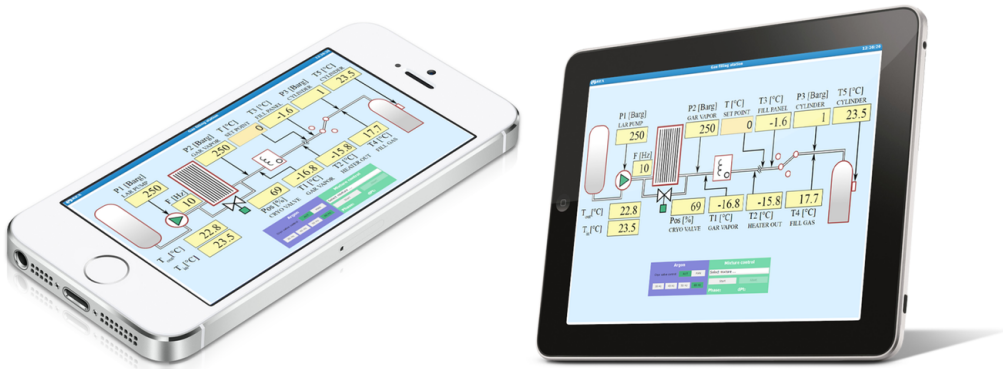


6. You can toggle the switches and observe the results. The virtual switches are linked

to the individual CNB function blocks therefore the effect is the same as toggling the values directly in REXYGEN Studio.

7. You can also change the timer setting and shorten or lengthen the interval.
8. See [4] for detailed information about WebBuDi elements and possible customization (colors, backgrounds etc.).
9. The default URL address is <http://192.168.1.100:8008/hmi/index.html> (replace 192.168.1.100 with the IP address of your platform).
10. The default port of the webserver (8008) can be changed in RexCore settings. See [5] for details.

Please note that there is also a program called REXYGEN HMI Designer, which allows you to create graphical user interfaces. Appendix A of this guide shows the steps to create a basic graphical interface. A more complex HMI is shown below solely for inspiration purposes.



4.4 Ready for interaction with the outer world

Well done! You have created the example 0101-01 from scratch⁴. You have learned the basic workflow for developing and running your algorithms using the REXYGEN system, which is the same for all platforms. Now it's time to add the so-called *input-output drivers* so that the algorithm can interact with sensors, actuators and external data.

Configuring the inputs and outputs of specific target devices based on the example project provided in this chapter is discussed in the I/O Configuration of Target Platforms manual.

⁴All examples which are part of the installation are marked by an ExampleID. The most up-to-date examples are available with the latest installation of development tools or at <https://www.rexygen.com/example-projects/>

Chapter 5

Summary

Congratulations, you have created the example project from scratch! You have learned how to develop, compile and run your algorithms on the platform. The interaction with sensors and actuators is provided via input-output driver of the REXYGEN system, which you have learned to configure and use.

You have achieved quite a lot in a relatively short time, haven't you? The purpose of this guide was to quickly show you the basic steps and tools for developing a project.

Now it's time to focus on your own project and keep learning on the go. There are function blocks which are much more powerful than the ones mentioned in this guide, there are many inspiring example projects, there are additional I/O drivers which you can use to expand the scope of your project, there are many ways to exchange data with external systems and devices, etc.

Remember that whenever you have some achievement to share, we will be happy to hear from you. And whenever you encounter any difficulties, we will be happy to help. You can reach us at support@rexygen.com.

Appendix A

Graphical HMI with REXYGEN HMI Designer

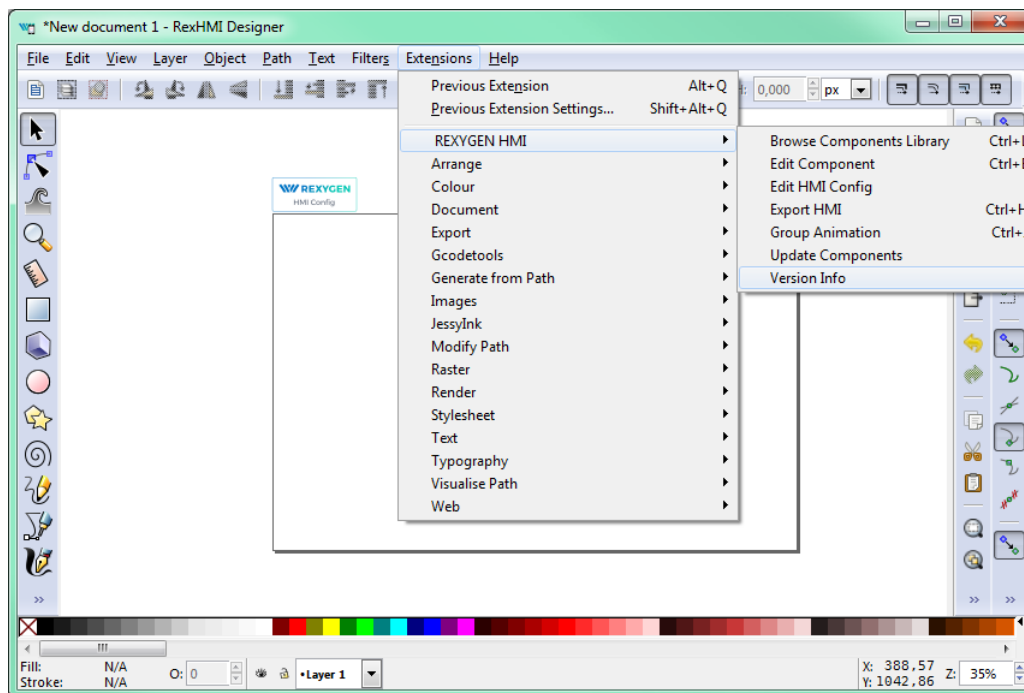
Chapter 4 describes the creation of a simple WebBuDi user interface. The REXYGEN development tools also contain the REXYGEN HMI Designer program which is a tool for designing custom graphical visualizations from predefined components¹. The REXYGEN HMI Designer is based on the well-known open-source vector editor InkscapeTM <https://inkscape.org/en/>.

In this chapter we'll develop an alternative HMI for the example 0101-01. Just like in the case of the WebBuDi user interface, the SVG file created with REXYGEN HMI Designer will serve as a source file which will become a part of your REXYGEN project. During compilation of the project the SVG file will be processed and converted to HTML, JS and CSS files.

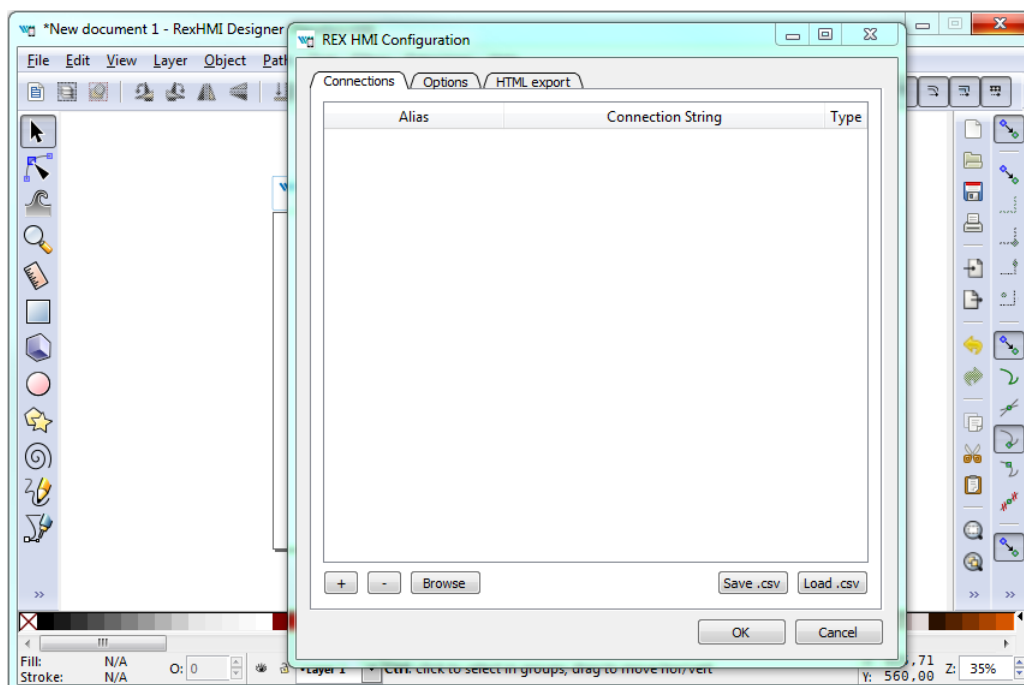
A.1 Initializing the HMI design

After launching the REXYGEN HMI Designer from *Start Menu* you will find a clean page. The first thing to do is to initialize the new visualization. The HMI is configured via the *REXYGEN HMI* extensions. Navigate to *Extensions* → *REXYGEN HMI* → *Edit HMI Config* in the menu.

¹Definition of custom components is also possible but it requires a bit of Javascript coding.



This extension adds a special component which contains general settings of the HMI. Close it with the OK button for now.



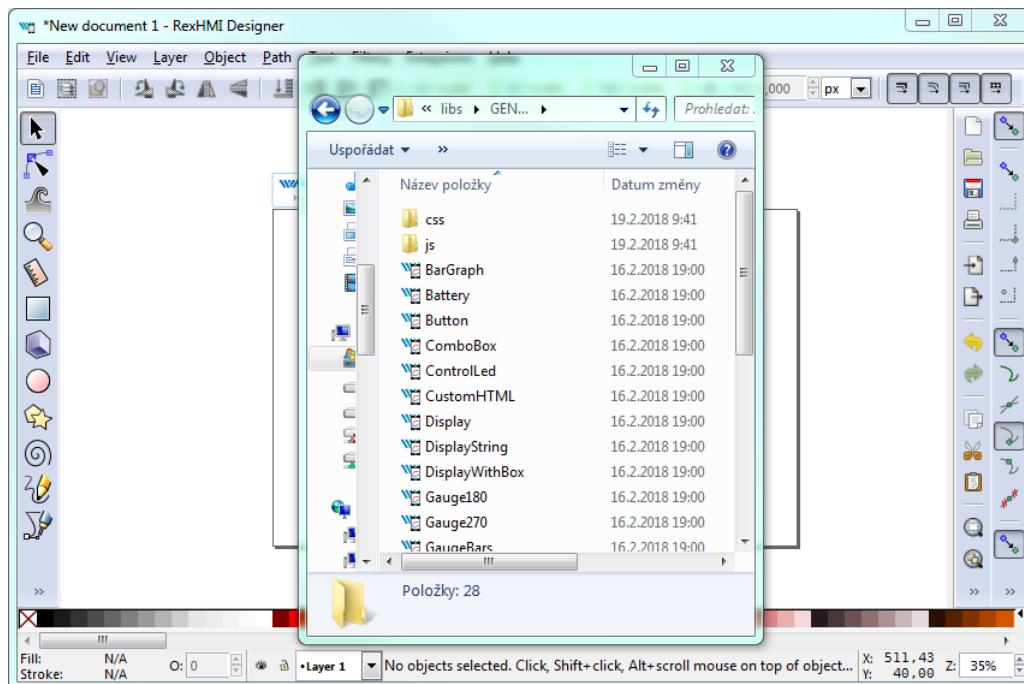
In order to include the HMI during the REXYGEN project compilation, the file name

has to end with `.hmi.svg`. Save the file as e.g. `designer.hmi.svg` to the `hmisrc` subfolder of your project. Use the standard *File* → *Save as* menu.

Note: If you want to replace the WebBuDi interface with the REXYGEN HMI Designer interface just delete the `index.hmi.js` and save the HMI as `index.hmi.svg`.

A.2 Adding the first HMI components

Now we will add some displays and inputs. The REXYGEN HMI Designer contains a library of components which you can use to build your HMI. The library is available through *Browse Components Library* extensions. Navigate to *Extensions* → *REXYGEN HMI* → *Browse Components Library* (Ctrl+L). It will open the explorer window with several folders. Open the **GENERAL** folder and drag&drop the **Display** to the drawing. The display will be used as an indicator of the remaining time in the **TIMER** function block.



For configuration of the display settings select the display by mouse click on top of it and use the *Edit Component* extension from *Extensions* → *REXYGEN HMI* → *Edit Component* (Ctrl+E). When the configuration dialog is opened you can change the *Title* to *Display_remaining*. The Edit Component dialog has two tabs: *Data points* and *Options*.

The *Data points* tab contains three items defining the behavior and animations of the component. Each data point contains an alias, which is in fact a connection to live data from the REXYGEN algorithm.

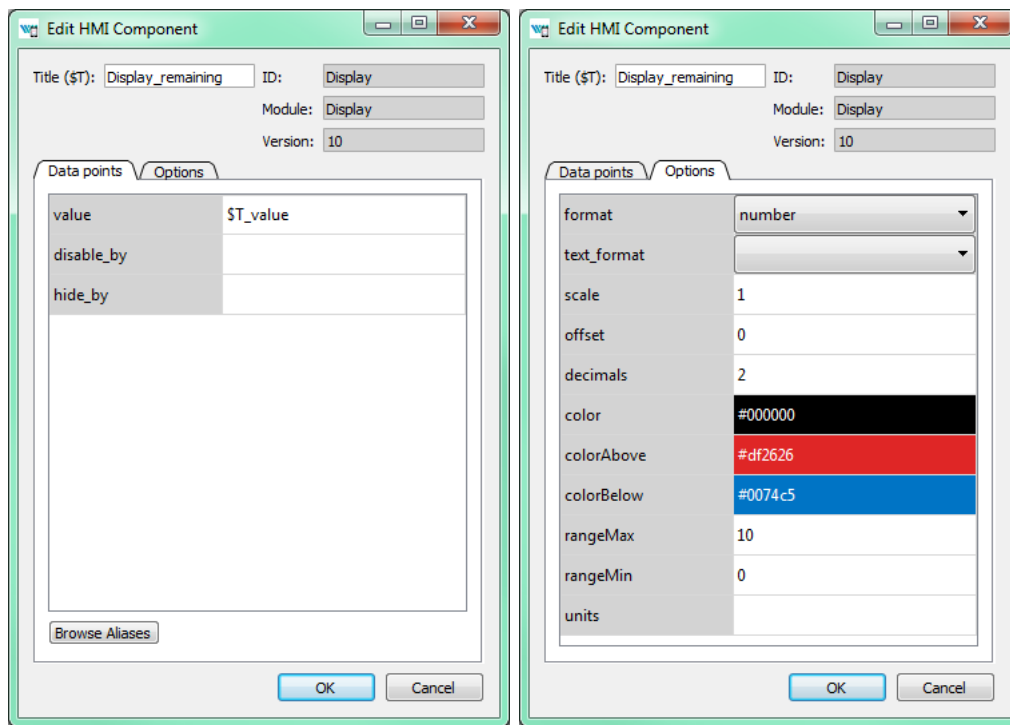
- **value** – The value to display.

- **disable_by** – If true the display is disabled and data are no longer updated.
- **hide_by** – If true the display is hidden.

The **value** property contains **\$T_value**. The **\$T** will be later automatically substituted by the *Title* of the component, resulting in the **Display_remaining_value** alias. The **disable_by** and **hide_by** data points are optional. Leave them blank at the moment.

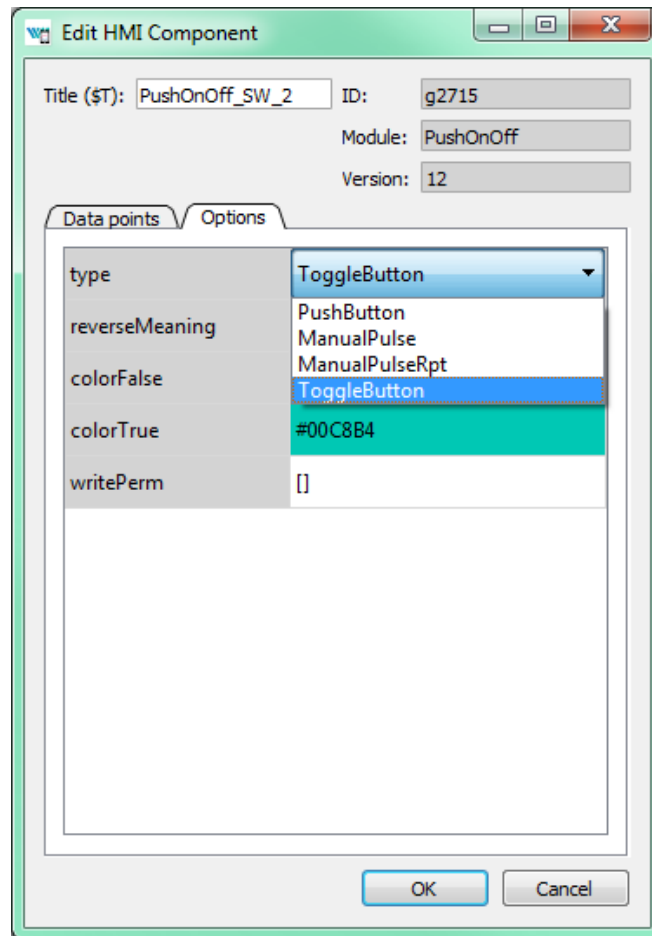
The *Options* tab contains several properties which are specific for the Display component. You can find the description of each component and property in [4]. Leave the default values for now and press OK.

Note: Each component is in fact one SVG group with unique content. You can copy the components all over the screen using copy (Ctrl+C) and paste (Ctrl+V) approach.



Now we will add controls for all the switches (CNB blocks). All of them will be controlled using the *PushOnOff* components. Add them from the library. Select the first *PushOnOff* and open the editor dialog *Extensions* → *REXYGEN HMI* → *Edit Component* (Ctrl+E). Change the title to *PushOnOff_SW_1* and select the *Options* tab. Select the **ToggleButton** item in the **type** property list. Close the *Edit Component* dialog using OK button. Copy-paste the button three times and remember to change the titles to *PushOnOff_SW_2*, *PushOnOff_SW_3*, *PushOnOff_SW_4*).

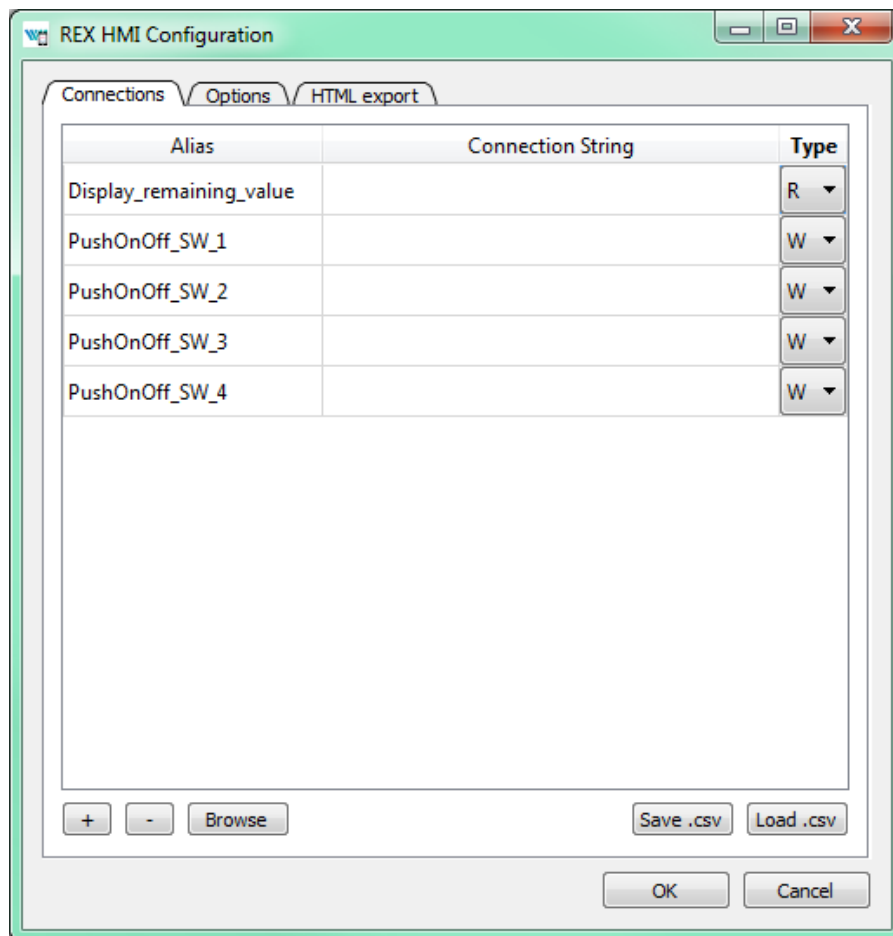
*Note: Throughout the REXYGEN HMI Designer you can use **double click** in Options tab to open the corresponding configuration dialog (color picker, number input, etc.).*



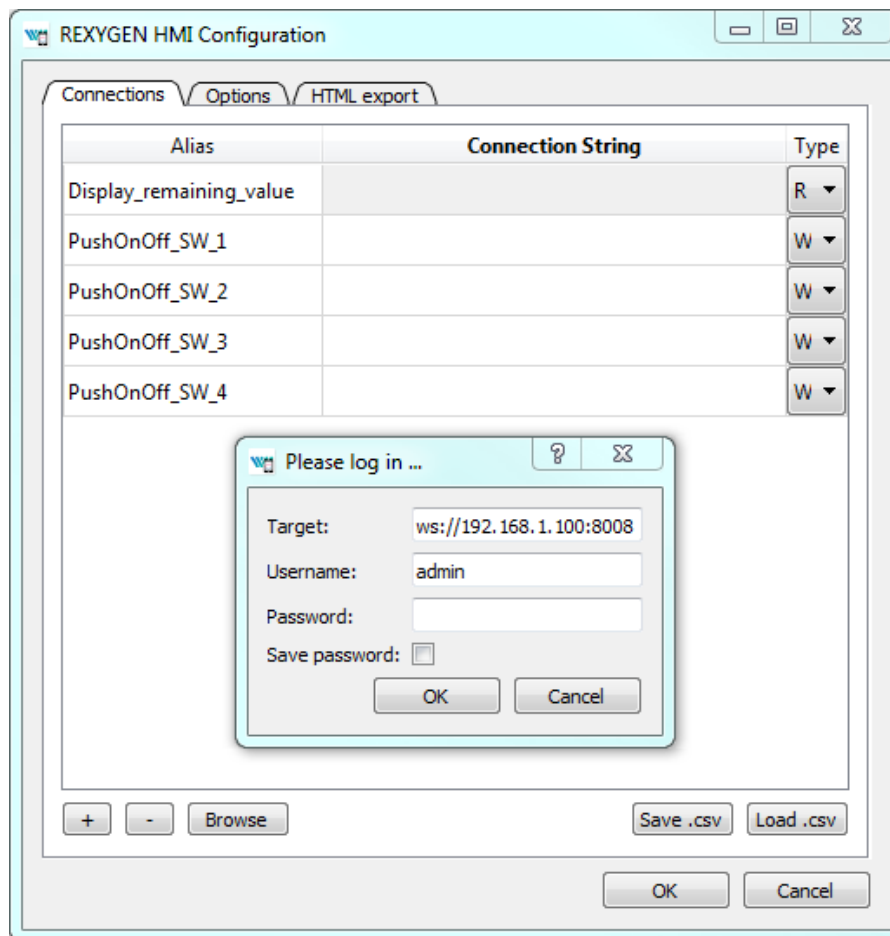
Now we have four *PushOnOff* buttons and one *Display* and we want to link all components with live data from the target device.

A.3 Linking HMI components with the running algorithm

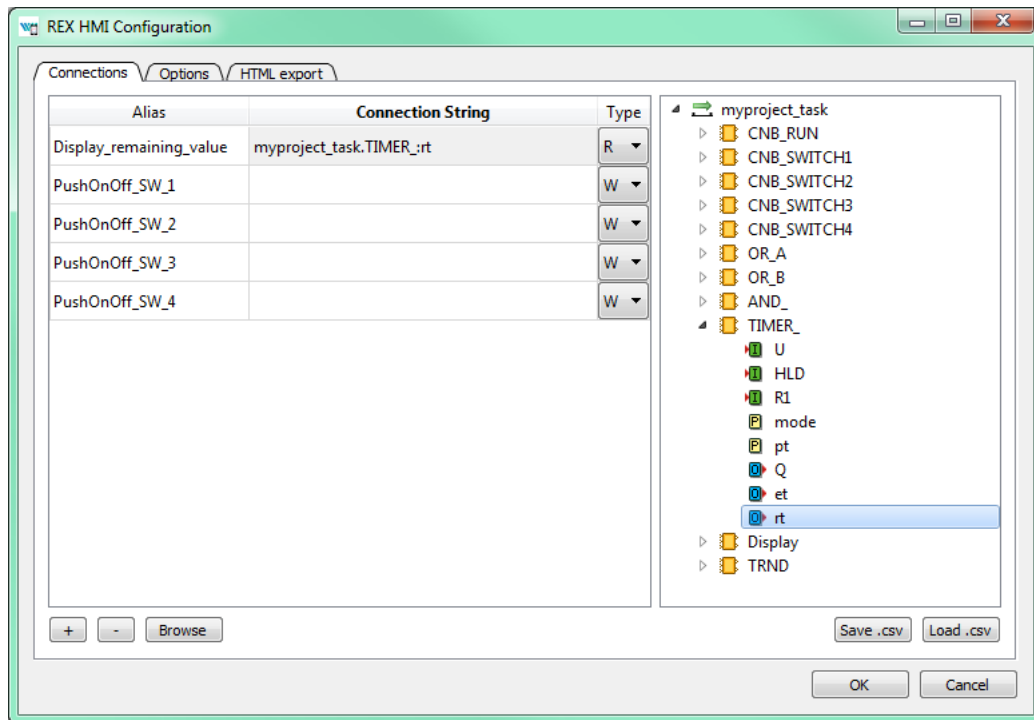
Open the *HMI Configuration* dialog either using *Extensions* → *REXYGEN HMI* → *Edit HMI Config* or just unselect all components in the drawing (click outside any component) and press *Ctrl+E*. The configurator parses all components and creates a list of used *Aliases*. Each of them should be linked with one signal in the running algorithm. You can either fill in each connection string manually or you can use the *Browse* function.



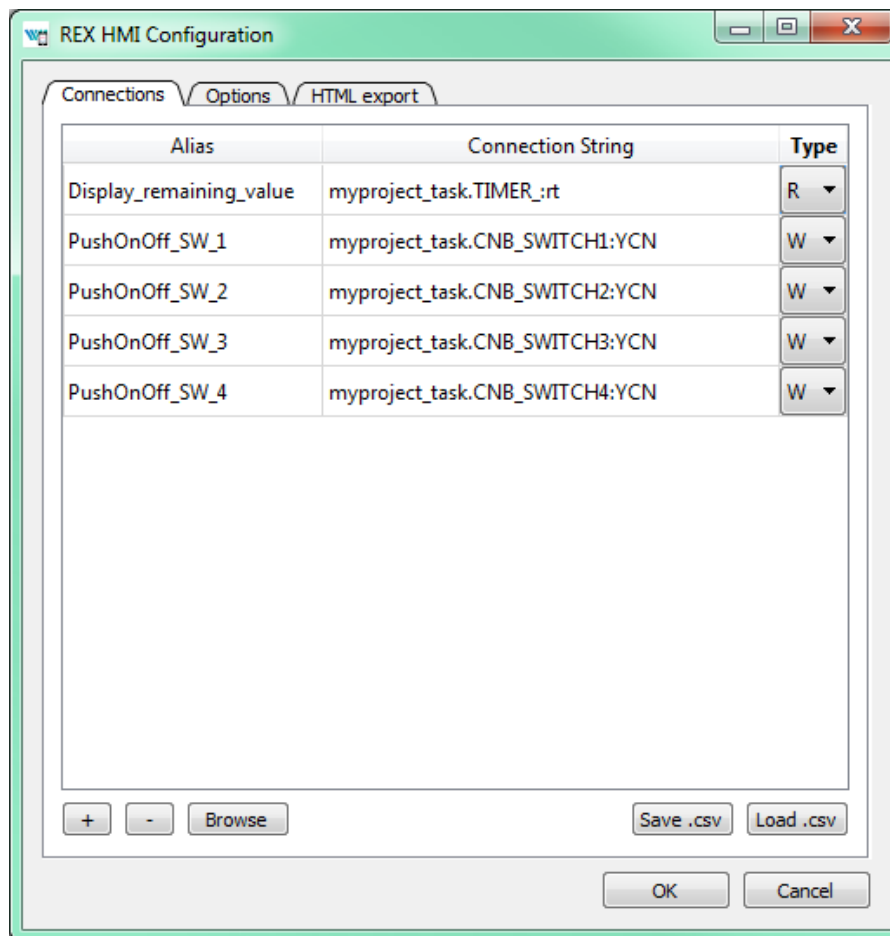
The *Browser* requires a target device with running algorithm. Make sure the algorithm is running, see Section 4.2. Also the target URL must be set. Press *Browse* button. The login dialog will be opened. Change **Target** to 192.168.1.100:8008 (replace 192.168.1.100 with the IP address of your platform). Unless you changed the login credentials, use the default username **admin** with an empty password. After a successful login the connection tab is expanded with a tree-view of the running algorithm (you have already seen this tree-view in algorithm diagnostics).



Select *Connection String* field of the `Display_remaining_value` item and afterwards browse the tree to the `TIMER_` block and **double-click** the `rt` parameter. The connection string of the parameter is copied to the `Display_remaining_value` alias, which is shown in the next figure.

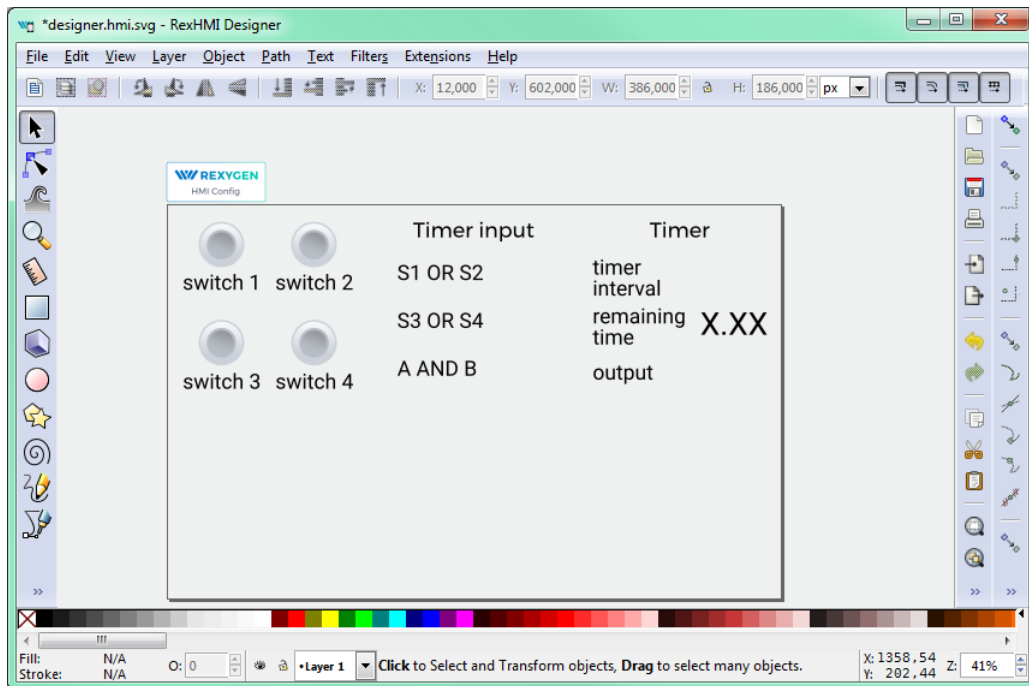


Once the display is linked we will also link the switches. Just browse the tree to CNB_SWITCH1, select the *Connection String* field of the *PushOnOff_SW_1* alias and double-click the YCN parameter. Repeat this for the remaining connection strings. Afterwards press OK to save the settings and close the dialog.



The interactive components in REXYGEN HMI Designer are just parts of the drawing. The user can position the components arbitrarily and add as many decorative static components to as needed. We will add some text descriptions to distinguish individual buttons. Use the *Text tool* (F8), click anywhere in an empty space and start typing. Pick the *Select and Transform tool* (F1) afterwards and move the texts and buttons.

Note: More information about custom drawing can be found in Inkscape tutorials (See the Help → Tutorials → Inkscape: Basic)

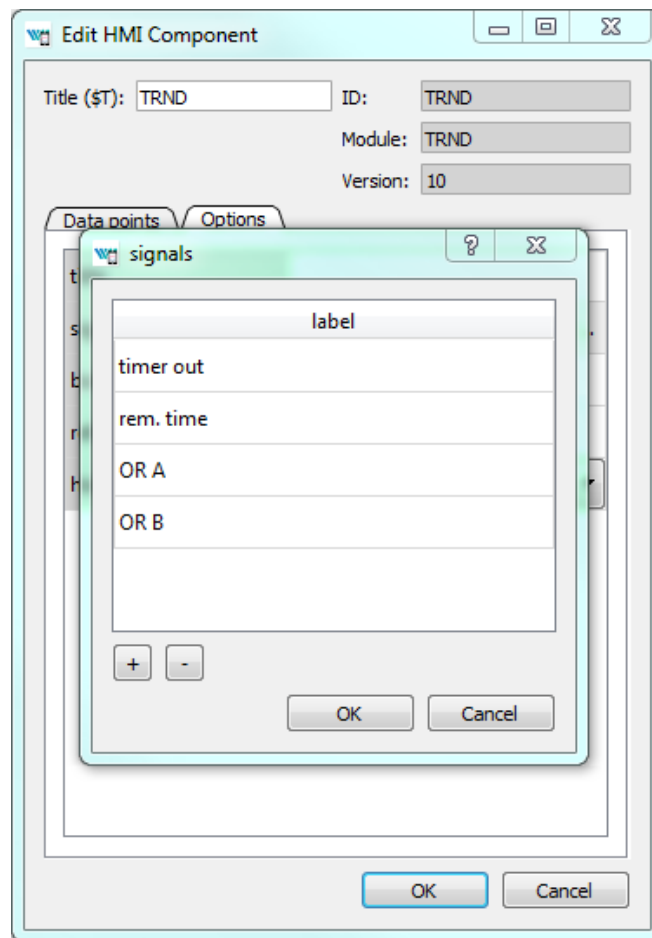


A.4 Adding more HMI components

Next we will add more components to control the timer and show the status of the OR and AND blocks. Open the Elements library (Ctrl+L) and add one *Input* and four *Led* components. The LEDs will show the status of Boolean values and the *Input* will be used for changing the default timer interval value.

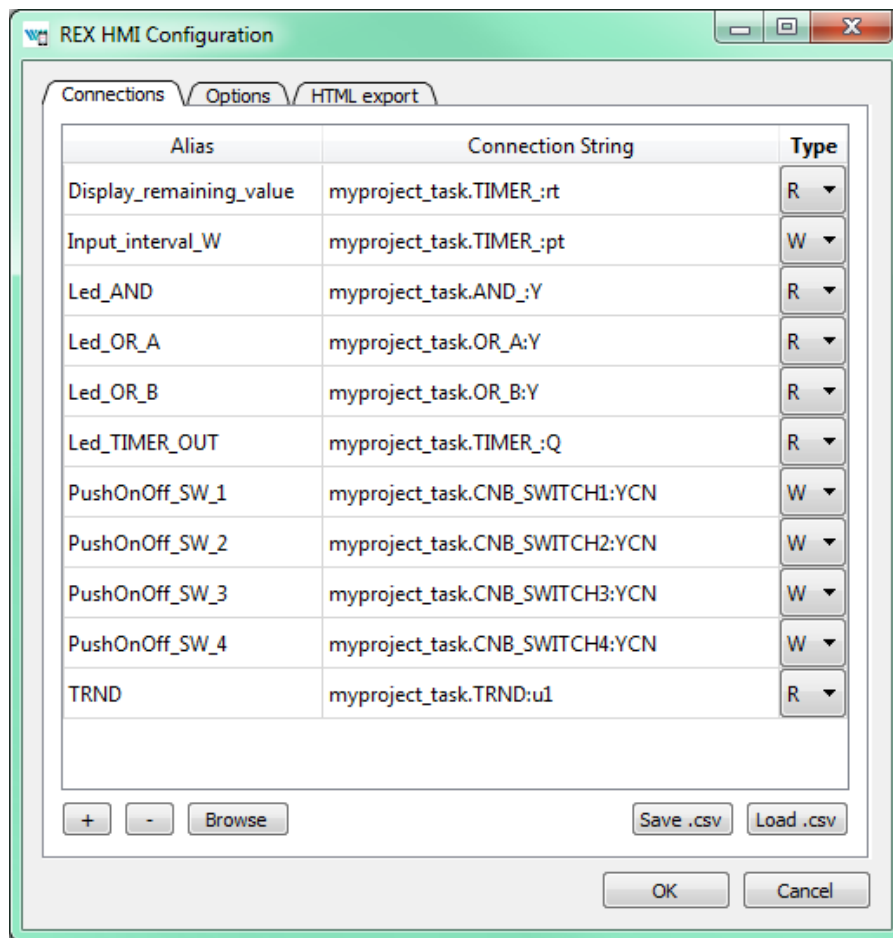
In the *Led* components just edit the **Title** via the *Edit Component* extension (select the component by single click and press Ctrl+E). The titles should be **Led_OR_A**, **Led_OR_B**, **Led_AND**, and **Led_TIMER_OUT** respectively. Finally edit the *Input* component by changing the **Title** to **Input_interval**.

The last component we need is a graph showing the time-plot of data from the TRND block. Use the components library (Ctrl+L) and add a *TRND* component. You can adjust its size to fit the desired position. Edit the component (Ctrl+E) and change the **Title** to **TRND** and switch to the *Options* tab. Double-click the **signals** property. Add the following labels using the plus (+) button: **timer out**, **rem. time**, OR **A**, OR **B**. These labels will be shown in the legend of the graph.



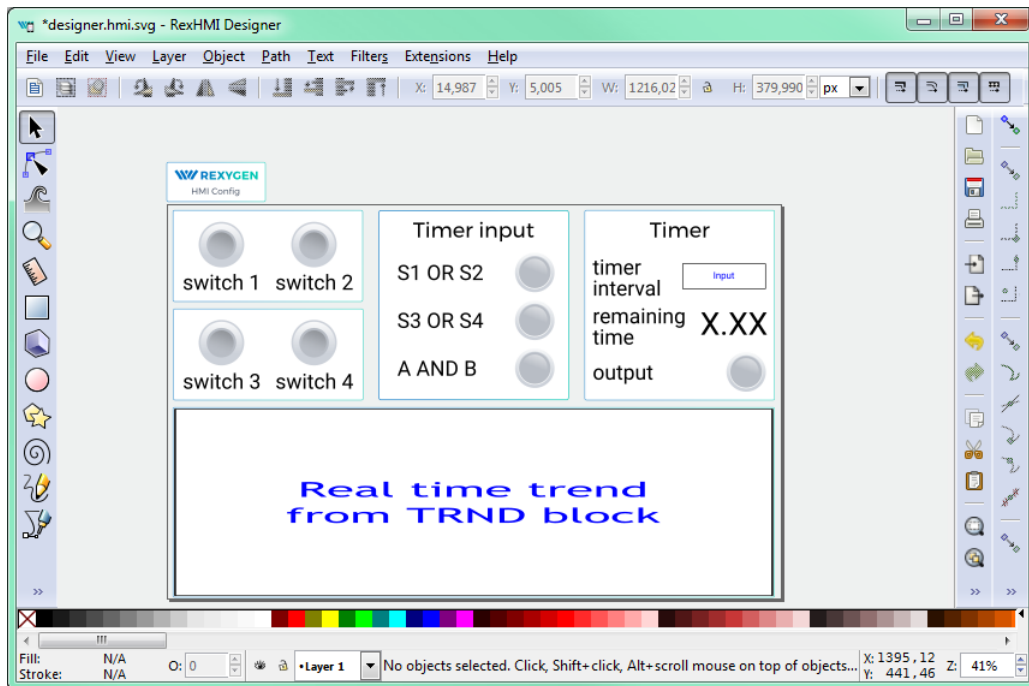
A.5 Additional links to the running algorithm

When all the components are in place we link them to the running algorithm again. Just repeat the procedure described in Section A.3, open the HMI Configuration dialog (*Extensions* → *REXYGEN HMI* → *Edit HMI Config*) and browse the running algorithm to pair the remaining aliases with corresponding connection strings. The list is shown in the following image.



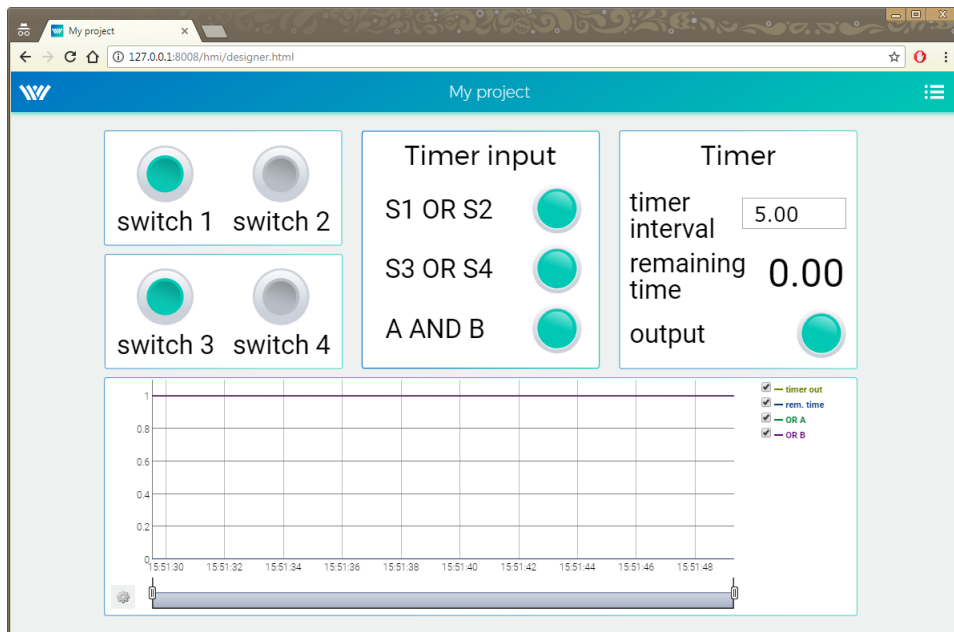
A.6 The final steps

Congratulations, your first graphical HMI is almost ready! Add a few rectangles which will visually divide the HMI into individual sections. Use the *Squares and rectangles tool* (F4), draw the rectangle, pick a color from the palette and send the rectangle to the background using the End key. Do not forget to save the drawing.



As mentioned earlier, the **.hmi.svg* files in the `hmisrc` folder are automatically processed while the project is compiled in the REXYGEN Studio application. The project main file must contain the HMI block with `GenerateRexHMI` parameter enabled. This was already covered in Section 4.3 so you should have everything ready.

Once you compile the project again and download it to your platform, the HMI will be accessible via a web browser. Navigate to `http://192.168.1.100:8008/hmi/designer.html` (replace 192.168.1.100 with the IP address of your platform). You will see your HMI with live data.



This tutorial covers only the very basic components. If you want to get more information about additional components, see [\[4\]](#).

Appendix B

Licensing of the REXYGEN system

The licensing model of the REXYGEN system is quite simple:

- The development tools are free to use, you can install it on as many computers as you want.
- The RexCore runtime module always needs a licence to run on your platform. There are DEMO licences available at no cost and there are permanent licences which you can purchase. Each separate platform needs an individual licence.

B.1 Obtaining a DEMO licence

The DEMO licence is intended for evaluating, testing and educational purposes. Feel free to experiment with the DEMO licence as long as you need. Commercial use of the DEMO licence is not allowed.

When you try to run your algorithm on a device which does not have a valid licence, you are offered a few options. Unless you already have a licence key or a licence voucher, you'll need to get a DEMO licence.

This dialog box, titled "No licence on target device", informs the user that no valid licence key was found. It provides three main options: requesting a free demo licence, applying a licence voucher, or entering an existing licence key. A "Connect anyways" button is also present. At the bottom, it displays the target device identifier (Site ID) and the REXYGEN runtime core version.

No valid licence key has been found on the target device.

Request a free DEMO LICENCE
Try REXYGEN at no cost

I have a LICENCE VOUCHER
Apply your licence voucher and get a licence key

I have a LICENCE KEY
Enter your licence key and you are ready to go

Connect anyways

Target device identifier (Site ID):
WGWY-JJW8-GGSZ-NMA9-2EFI-S4LT-QW9Z-MSYH

Version:
REXYGEN runtime core version 2.50.7.9077

Identify yourself and you'll receive a DEMO licence key via e-mail. The licence key is called a **SiteKey**.

This dialog box, titled "Get DEMO licence key", is used to request a demo licence. It contains input fields for the user's first name, last name, and email address, along with a text area for a description. A "Get DEMO licence" button is located below the description field. At the bottom, there are two links: "Privacy policy statement" and "Registered REXYGEN user?".

Get DEMO licence key

First name: John

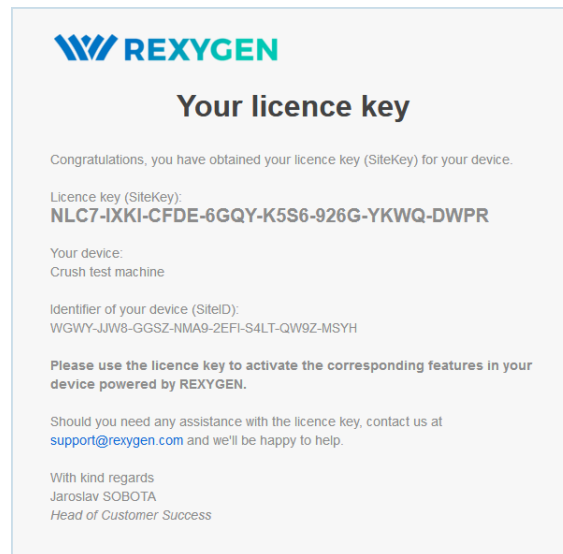
Last name: Doe

Email: johndoe@domain.com

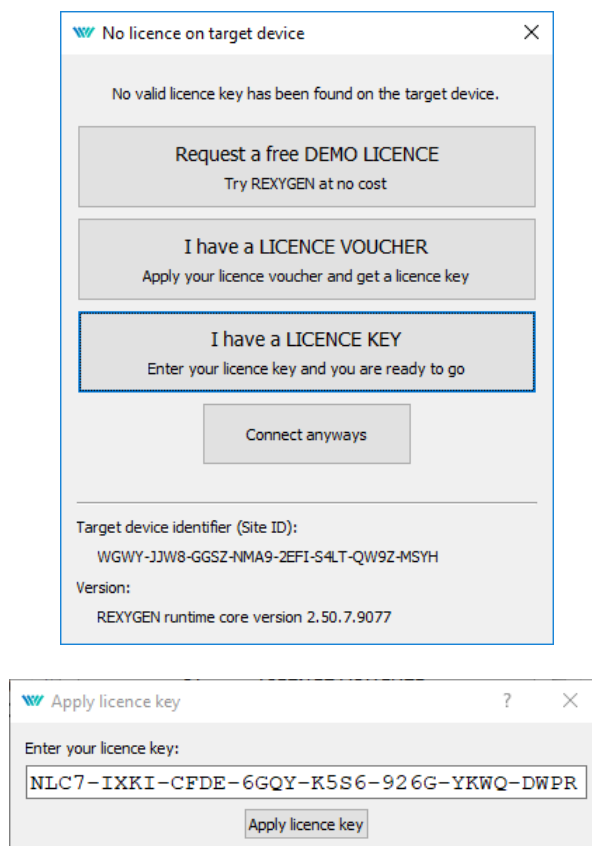
Description (for your reference):
Crush test machine

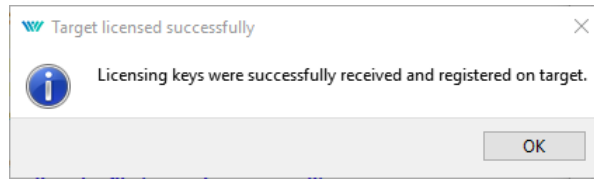
Get DEMO licence

[Privacy policy statement](#) [Registered REXYGEN user?](#)



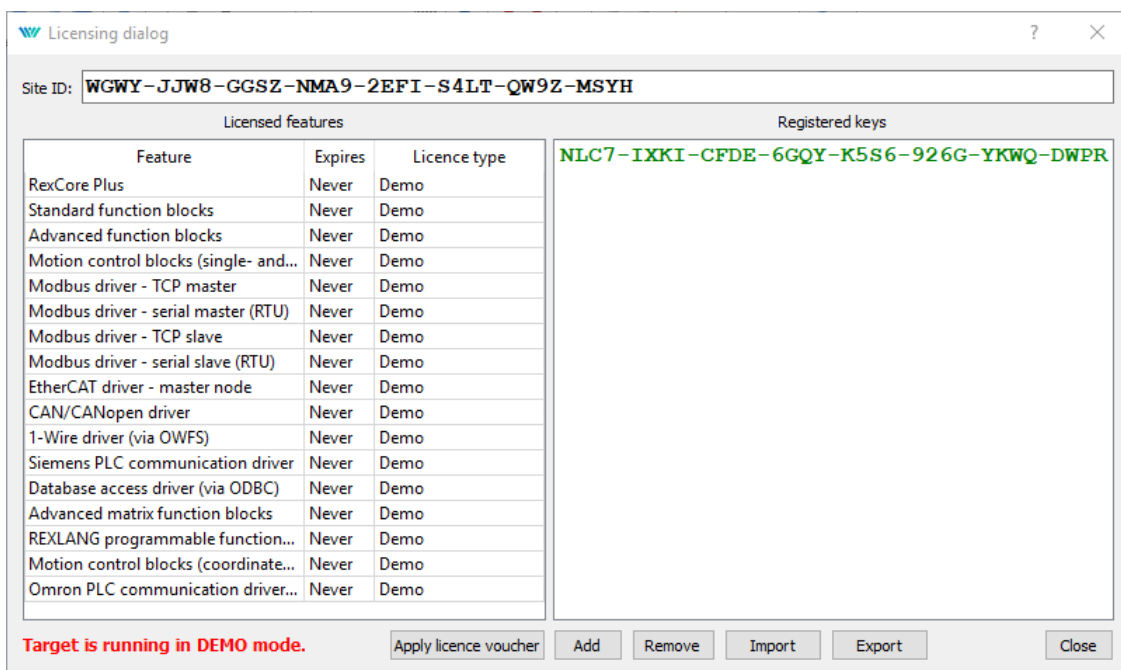
Once you have your DEMO licence key (SiteKey), apply it.





Once successfully applied, your algorithm will download to your platform.

You can review your licence keys in REXYGEN Studio. Go to menu *Target* → *Licensing* to list the licence keys and activated modules.



Evaluation version of RexCore (REXYGEN runtime core) is functional for 2 hours. It is possible to run your algorithm on the platform but you cannot store it permanently. The algorithm resides only in the RAM memory therefore it will not run after a restart or power-up. You can use almost all function blocks, see [1]. The RexCore runtime core on the target device is terminated after 2 hours of operation in demo mode without any warning. After a restart, you have another 2 hours for your experiments.

B.2 Obtaining a permanent licence

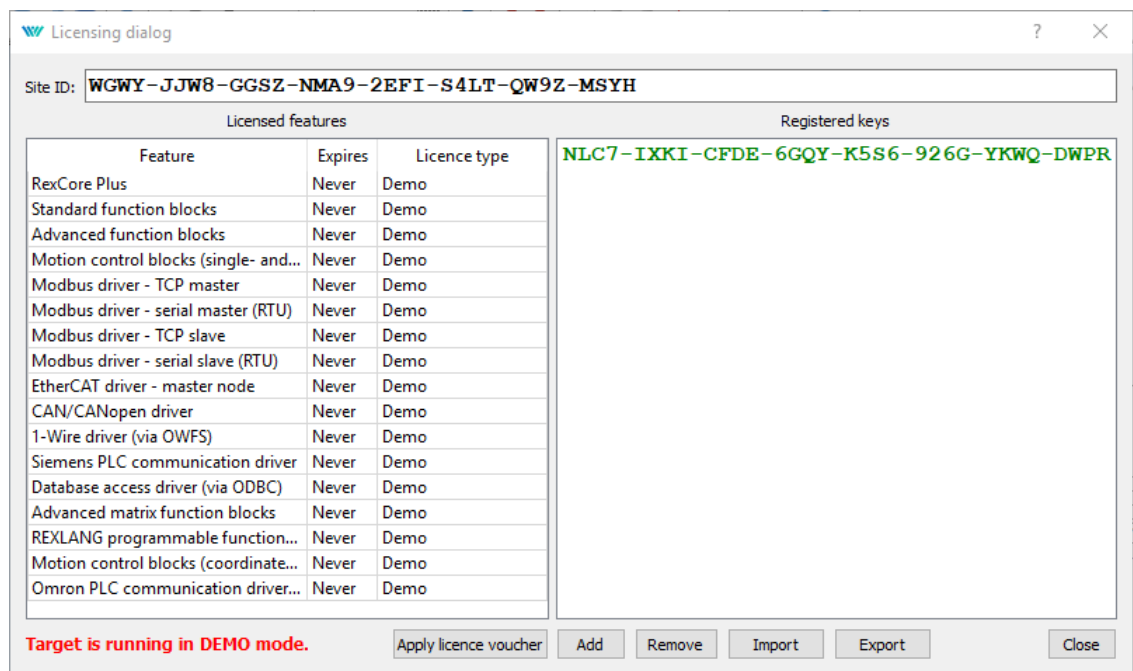
It is necessary to activate the RexCore runtime module and optional additional modules for permanent operation. This can be done using the licence, which you can obtain at

www.rexygen.com/pricing

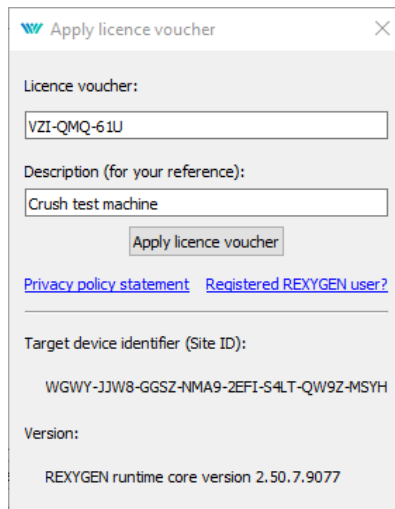
B.2.1 Activation of the permanent licence

Each device running the RexCore runtime module is identified by the so-called **SiteID** tag. The purchased licence must be associated with the hardware device, i.e. with the **SiteID** tag.

1. In REXYGEN Studio, connect to the device and go to menu *Target* → *Licensing*.
A dialog pops up and you will see the **SiteID** and your licences.



2. Delete any DEMO licence keys if present.
3. Afterwards, click the *Apply licence voucher* button and enter your licence voucher code.



Apply licence voucher

Licence voucher:

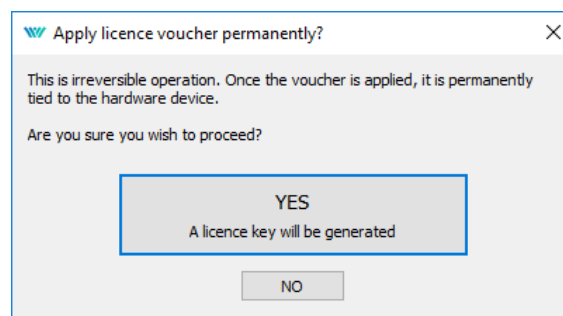
Description (for your reference):

[Privacy policy statement](#) [Registered REXYGEN user?](#)

Target device identifier (Site ID):
 WGWY-JJW8-GGSZ-NMA9-2EFT-S4LT-QW9Z-MSYH

Version:
 REXYGEN runtime core version 2.50.7.9077

4. You are asked to confirm the association – this is the last and irreversible step.



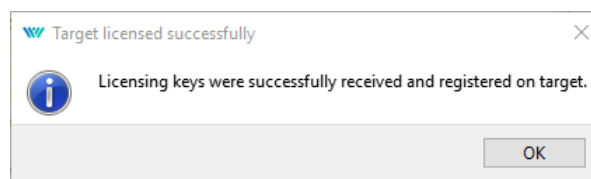
Apply licence voucher permanently?

This is irreversible operation. Once the voucher is applied, it is permanently tied to the hardware device.


Are you sure you wish to proceed?

A licence key will be generated

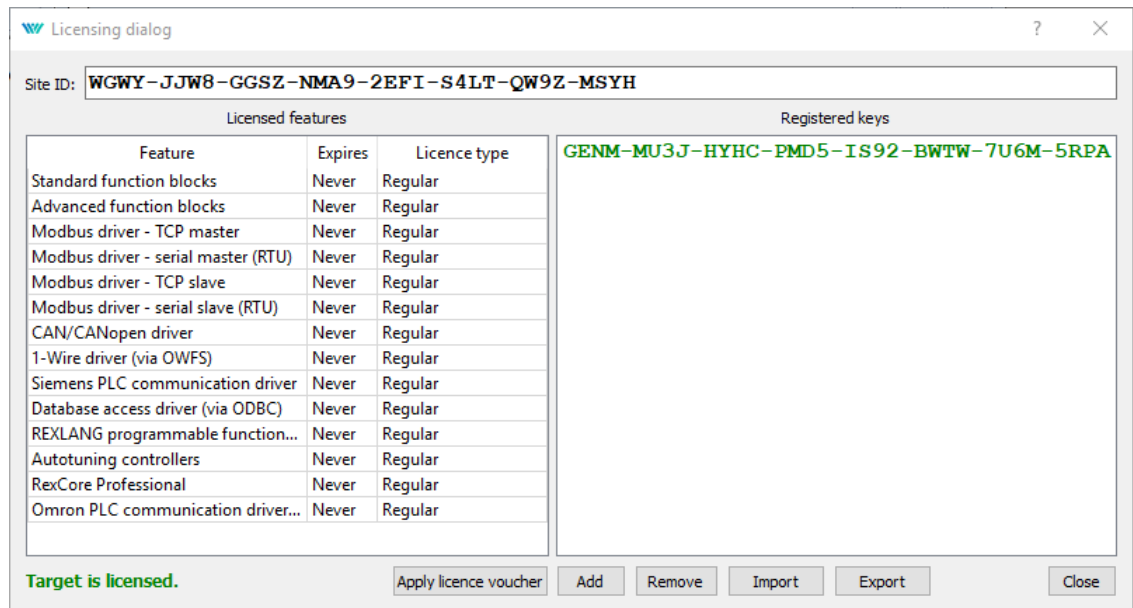
5. The so-called **SiteKey** licence key is generated from your licence voucher and it is stored in your device. The licence key allows permanent operation of the runtime core.



Target licensed successfully

 Licensing keys were successfully received and registered on target.

6. To check the licence, make sure the **REXYGEN Studio** is connected to the device and open the licensing dialog again (*Target* → *Licensing*). Check that the licence was applied correctly and that the **RexCore** runtime module no longer runs in demo mode.



7. It is highly recommended to check the licence again after a reboot of the device.

Appendix C

IP address of your WAGO PFC powered by REXYGEN

By default, the Ethernet adapters of your Wago PFC are configured as follows:

- X1: DHCP client
- X2: static IP address 169.254.0.100, netmask 255.255.255.0

If there is no DHCP server in your network or you do not know how to find the IP address your platform has been assigned in your network, run a DHCP server on your PC. Afterwards connect your PC with the platform X1 directly using a standard Ethernet cable.

For DHCP server you can use e.g.

- DHCP server for Windows, <http://www.dhcpserver.de/cms/download/>
- Tftpd, <http://tftpd32.jounin.net/>

As soon as the connection is initialized, your platform will be assigned an IP address and the DHCP server software will list it.

Alternatively you can set a static IP address on your PC (e.g. 169.254.0.5, netmask 255.255.255.0) and use the X2 Ethernet adapter of your platform.

This will allow you to configure network settings to your needs using the web interface of the device, accessible via e.g. <http://169.254.0.100/wbm> (use the IP address of your device!).

Bibliography

- [1] REX Controls s.r.o.. *Function blocks of REXYGEN – reference manual*, 2020. [→](#).
- [2] REX Controls s.r.o.. *OpcUaDrv driver of REXYGEN – user guide*, 2020. [→](#).
- [3] REX Controls s.r.o.. *REXYGEN Studio – User manual*, 2020. [→](#).
- [4] REX Controls s.r.o.. *REXYGEN HMI – User manual*, 2020. [→](#).
- [5] REX Controls s.r.o.. *RexCore – User manual*, 2020. [→](#).